



LOFTNESS™

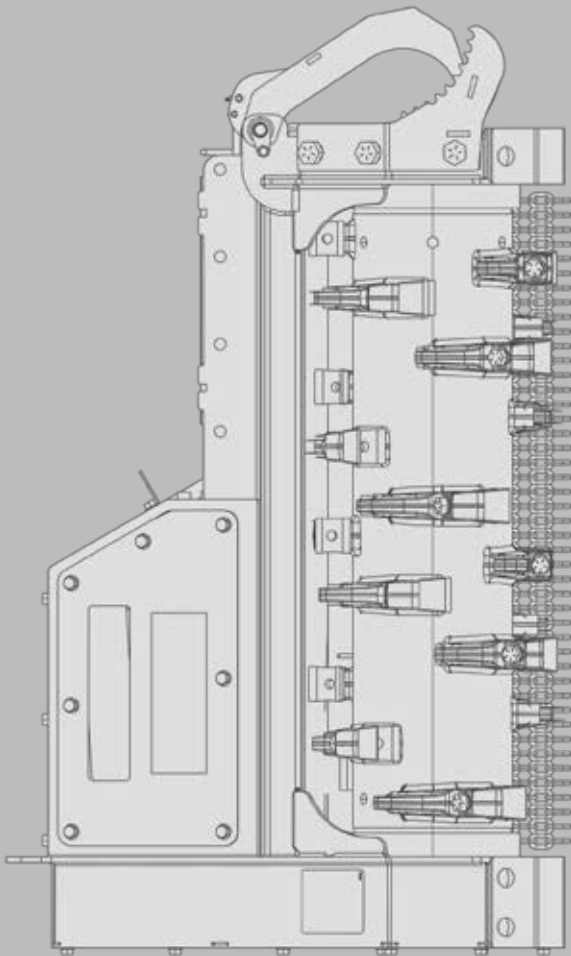
battle 

**AX** Excavator



[www.SoundHM.com](http://www.SoundHM.com)

**DESIGNED WITH  
PRODUCTIVITY  
IN MIND**



# DON'T BITE OFF MORE THAN YOU CAN CHEW... OR LESS

The Battle Ax is a truly unique mulching head from Loftness. It has an innovative depth gauge design that's proven to perform better than any other bite-control rotor on the market. Plus, the two-stage cutting chamber is a more effective solution for sizing material than drum mulchers that use hydraulic doors to trap material. The combination of these features and more allow the Battle Ax to process material more thoroughly and complete jobs quicker than competitive units. Not to mention, our products are backed by a large dealer network and superior customer support from our 100-percent employee-owned company based in the U.S.A. We're proud of our Battle Ax mulching head...and so are the people who run them.



## **20** SERIES

**10,000 - 20,000** lb Excavators  
**31", 41" & 51"** Cutting Width  
**13.5"** Diameter Rotor



## **30** SERIES

**18,000 - 36,000** lb Excavators  
**41" & 51"** Cutting Width  
**17"** Diameter Rotor



## **40** SERIES

**36,000 - 60,000** lb Excavators  
**51"** Cutting Width  
**17"** Diameter Rotor



## **50** SERIES

**50,000 - 88,000** lb Excavators  
**51"** Cutting Width  
**21"** Diameter Rotor

## // *Depth Gauges*

The Battle Ax rotor includes built-in depth gauges, which function similarly to raker teeth on chain saws to prevent the attachment from engaging too much material at one time. This unique design is more ideal for managing the amount of material being fed into the attachment than competitive ring-style rotors, which many operators find to be overly limiting.



## // *Two-Stage Cutting Chamber*

The Battle Ax features the Loftness-exclusive two-stage cutting chamber design, which is capable of processing material more thoroughly than competitive units by cutting material twice. Material is initially cut by the replaceable primary shear bar, located on the rear bumper. Then, a secondary shear bar behind the front bumper drives material back down into the knives for further processing before it is discharged to the ground.



## // *Belt Drive*

A heavy-duty belt drive isolates the motor from the rotor, helping to achieve high performance and long service life.



## // *Staggered/Spiral Tooth Pattern*

A staggered tooth arrangement ensures single-tooth contact with the work surface at all times while maintaining optimal rotor balance.



## // *Custom Quick-Attach or Pin Mount*

Custom mounting plates are available for attaching the Battle Ax to any make of excavator. Both pin-type and quick-attach styles are available.



# 20 SERIES

10,000-20,000 lbs Excavators

SPECIFICATIONS

|                                      | 31BX20             | 41BX20               | 51BX20               |
|--------------------------------------|--------------------|----------------------|----------------------|
| <b>Cutting Width</b>                 | 31" (0.79 m)       | 41" (1.04 m)         | 51" (1.3 m)          |
| <b>Overall Width</b>                 | 46.25" (1.17 m)    | 56.25" (1.43 m)      | 66.25" (1.68 m)      |
| <b>Weight Without Mount</b>          | 879 lbs (398.7 kg) | 1,084 lbs (491.7 kg) | 1,218 lbs (552.5 kg) |
| <b>Number Of Teeth</b>               | 20                 | 26                   | 32                   |
| <b>Hydraulic Horsepower Required</b> | 20-70              | 25-70                | 25-70                |
| <b>Recommended Excavator Weight</b>  | 10,000-15,000 lbs  | 15,000-20,000 lbs    | 15,000-20,000 lbs    |

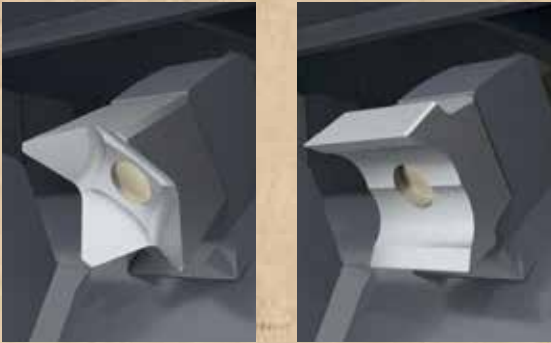
## FEATURES

- › **“Battle Ax” Rotor Design** - Uses Built-In “Depth Gauges” to Control Cutting Depth, Like “Raker” Teeth on a Chainsaw
- › **Two-Stage Cutting Chamber** - 2 Shear Bars, Producing a Finer Mulch With Fewer Passes
- › **Adjustable Primary Shear Bar**
- › **Two Tooth Designs** - 4 Point Beaver Teeth or Ultra Sharp Reversible Planer
- › Efficient Staggered/Spiral Tooth Pattern
- › Standard Flat Plate Mount / Included in Base Price
- › Optional Mounts - Direct, Quick Attach or Pivoting
- › Optional Spade Hook - With Optional Hydraulic Thumb
- › Power Requirement - 20-70 Hydraulic HP (15-35 GPM @ up to 4100 PSI)
- › 45cc Fixed Displacement Gear Motor
- › Use With or Without Case Drain
- › 3 Band Belt Drive
- › 13.5 in (34 cm) Diameter Rotor
- › Rotor Speed 1700-2300 RPM
- › 1 3/4 in (44.5 mm) Piloted Double Taper Roller Bearings
- › Low Profile Body/Less Stress on Excavator Arm
- › Machined Anti-Wrap Bearing Protection
- › Steel Deflector Chains
- › Premium Strength Steel Housing



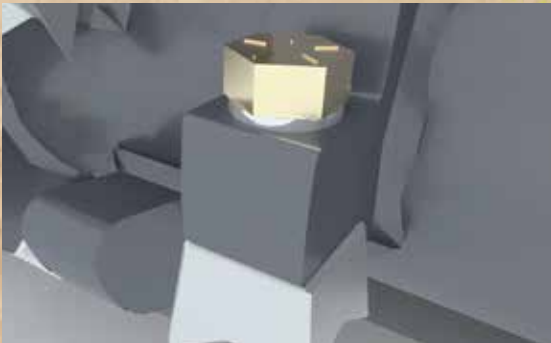
## // **High-Pressure Gear Motor**

The 20 Series Battle Ax features a 45cc high-pressure gear motor for excavators with hydraulic systems ranging from 15 to 35 gallons per minute and up to 4,100 PSI (20 to 70 hydraulic horsepower). This reliable motor turns the rotor from 2,000 to 2,600 RPM.



## // **Two Teeth Options**

The 20 Series Battle Ax is available with either 4-point beaver teeth or Quadco planer blades.



## // **Tooth Mounting**

The cutting teeth are mounted to the rotor with a single bolt. They can be easily reversed or replaced on the jobsite using a common hex socket.



## // **Optional Spade Hook/Hydraulic Thumb**

The spade hook is a useful tool for positioning material to be mulched. A hydraulic thumb is also optional for added versatility.



## // **3 Band Belt Drive**

A three-groove banded belt system with spring-loaded idler efficiently transfers power to the rotor. Five different combinations are available to perfectly match the hydraulic output from the power unit.

SEE THE FULL LIST OF FEATURES AND SPECS AT **LOFTNESS.COM**  
or call 800-828-7624.





# 30 SERIES

18,000-36,000 lbs Excavators

SPECIFICATIONS

|                               | 41BX30               | 51BX30                 |
|-------------------------------|----------------------|------------------------|
| Cutting Width                 | 41" (1.04 m)         | 51" (1.3 m)            |
| Overall Width                 | 56.375" (1.43 m)     | 66.375" (1.69 m)       |
| Weight Without Mount          | 2,010 lbs (911.7 kg) | 2,210 lbs (1,002.4 kg) |
| Number Of Teeth               | 20                   | 26                     |
| Hydraulic Horsepower Required | 45-150               | 45-150                 |
| Recommended Excavator Weight  | 18,000-36,000 lbs    | 18,000-36,000 lbs      |

## FEATURES

- › **“Battle Ax” Rotor Design** - Uses Built-In “Depth Gauges” to Control Cutting Depth, Like “Raker” Teeth on a Chainsaw
- › **Two-Stage Cutting Chamber** - 2 Shear Bars, Producing a Finer Mulch With Fewer Passes
- › **Adjustable Primary Shear Bar**
- › **Three Tooth Designs** - Reversible Planer, Hard Surface Planer or Double Carbide
- › Efficient Staggered/Spiral Tooth Pattern
- › Standard Flat Plate Mount / Included in Base Price
- › Optional Mounts - Direct, Quick Attach or Pivoting
- › Optional Spade Hook - With Optional Hydraulic Thumb
- › Power Requirement - 45-150 Hydraulic HP (20-60 GPM @ up to 6000 PSI)
- › 105cc Adjustable Displacement Piston Motor
- › 37 mm Synchronous Belt
- › 17 in (43.2 cm) Diameter Rotor
- › Rotor Speed 1800-2100 RPM
- › 2 3/16 in (55.56 mm) Piloted Double Taper Roller Bearings
- › Low Profile Body/Less Stress on Excavator Arm
- › Machined Anti-Wrap Bearing Protection
- › Steel Deflector Chains
- › Premium Strength Steel Housing



## // **Adjustable-Displacement Piston Motor**

The 30 Series Battle Ax features a 105cc adjustable displacement piston motor for excavators with hydraulic systems ranging from 20 to 60 gallons per minute and up to 6,000 PSI (45 to 150 hydraulic horsepower). This motor turns the rotor from 2,000 to 2,600 RPM and can be manually adjusted for fine-tuning performance on a variety of excavators.



## // **Three Teeth Options**

The 30 Series Battle Ax is available with three tooth options: Quadco planer blades, hard-surface Quadco blades and double carbide teeth.



## // **Tooth Mounting**

The cutting teeth are mounted to the rotor with a single bolt. They can be easily reversed or replaced on the jobsite using a common hex socket.



## // **Optional Spade Hook/Hydraulic Thumb**

The spade hook is a useful tool for positioning material to be mulched. A hydraulic thumb is also optional for added versatility.



## // **Synchronous Belt Drive**

The positive drive, cog belt and sprocket design increase efficiency and require less maintenance than other drive types.

SEE THE FULL LIST OF FEATURES AND SPECS AT **LOFTNESS.COM**  
or call 800-828-7624.





# 40 SERIES

36,000-60,000 lbs Excavators

## 51BX40

|                               |                        |
|-------------------------------|------------------------|
| Cutting Width                 | 51" (1.3 m)            |
| Overall Width                 | 80.6" (2.05 m)         |
| Weight Without Mount          | 3,010 lbs (1,365.3 kg) |
| Number Of Teeth               | 26                     |
| Hydraulic Horsepower Required | 80-210                 |
| Recommended Excavator Weight  | 36,000-60,000 lbs      |

SPECIFICATIONS

## FEATURES

- › **“Battle Ax” Rotor Design** - Uses Built-In “Depth Gauges” to Control Cutting Depth, Like “Raker” Teeth on a Chainsaw
- › **Two-Stage Cutting Chamber** - 2 Shear Bars, Producing a Finer Mulch With Fewer Passes
- › **Adjustable Primary Shear Bar**
- › **Three Tooth Designs** - Reversible Planer, Hard Surface Planer or Double Carbide
- › Efficient Staggered/Spiral Tooth Pattern
- › Standard Flat Plate Mount Included in Price
- › Optional Mounts - Direct, Quick Attach or Pivoting
- › Optional Spade Hook
- › Power Requirement - 80-210 Hydraulic HP (25-75 GPM @ up to 6000 PSI)
- › 135cc Adjustable Displacement Piston Motor
- › 68 mm Synchronous Belt
- › 17 in (43.2 cm) Diameter Rotor
- › Rotor Speed 1800-2100 RPM
- › 2 1/2 in (63.5 mm) Piloted Double Taper Roller Bearings
- › Low Profile Body/Less Stress on Excavator Arm
- › Machined Anti-Wrap Bearing Protection
- › Steel Deflector Chains
- › Premium Strength Steel Housing





## // Adjustable-Displacement Piston Motor

The 40 Series Battle Ax features a 135cc adjustable displacement piston motor for excavators with hydraulic systems ranging from 25 to 75 gallons per minute and up to 6,000 PSI (80 to 210 hydraulic horsepower). This motor turns the rotor from 1,700 to 2,200 RPM and can manually adjusted for fine-tuning performance on a variety of excavators.



## // Three Teeth Options

The 40 Series Battle Ax is available with three tooth options: Quadco planer blades, hard-surface Quadco blades and double carbide teeth.



## // Tooth Mounting

The cutting teeth are mounted to the rotor with a single bolt. They can be easily reversed or replaced on the jobsite using a common hex socket.



## // Optional Spade Hook

The optional spade hook is a useful tool for positioning material to be mulched.



## // Synchronous Belt Drive

The positive drive, cog belt and sprocket design increase efficiency and require less maintenance than other drive types.

SEE THE FULL LIST OF FEATURES AND SPECS AT **LOFTNESS.COM**  
or call 800-828-7624.





# 50 SERIES

50,000-88,000 lbs Excavators

## 51BX50

|                               |                        |
|-------------------------------|------------------------|
| Cutting Width                 | 51" (1.3 m)            |
| Overall Width                 | 85.5" (2.17 m)         |
| Weight Without Mount          | 4,200 lbs (1,365.3 kg) |
| Number Of Teeth               | 20                     |
| Hydraulic Horsepower Required | 100-350                |
| Recommended Excavator Weight  | 50,000-88,000 lbs      |

SPECIFICATIONS

## FEATURES

- › **“Battle Ax” Rotor Design** - Uses Built-In “Depth Gauges” to Control Cutting Depth, Like “Raker” Teeth on a Chainsaw
- › **Two-Stage Cutting Chamber** - 2 Shear Bars, Producing a Finer Mulch With Fewer Passes
- › **Adjustable Primary Shear Bar**
- › **Triple Carbide Teeth**
  - › Efficient Staggered/Spiral Tooth Pattern
  - › Standard Flat Plate Mount / Included in Base Price
  - › Optional Mounts - Direct, Quick Attach
  - › Optional Spade Hook
- › Power Requirement - 100-350 Hydraulic HP (35-105 GPM @ up to 6000 PSI)
- › 165cc Adjustable Displacement Piston Motor
- › 68 mm Synchronous Belt
- › 21 in (53.3 cm) Diameter Rotor
- › Rotor Speed 1700-1900 RPM
- › 3 in (76.2 mm) Piloted Double Taper Roller Bearings
- › Low Profile Body/Less Stress on Excavator Arm
- › Machined Anti-Wrap Bearing Protection
- › Steel Deflector Chains
- › Premium Strength Steel Housing



## // **Adjustable-Displacement Piston Motor**

The 50 Series Battle Ax features a 165cc adjustable displacement piston motor for excavators with hydraulic systems ranging from 35 to 105 gallons per minute and up to 6,000 PSI (100 to 350 hydraulic horsepower). This motor turns the rotor from 1,700 to 1,900 RPM and can manually adjusted for fine-tuning performance on a variety of excavators.



## // **Triple Carbide Teeth**

The triple carbide teeth are engineered specifically for the most powerful excavators. They feature an overlapping cap design that helps prevent the tooth mounts from damage if the rotor is driven into rocks.



## // **Tooth Mounting**

The triple carbide teeth are mounted to the rotor with a single bolt. They can be easily reversed or replaced on the jobsite using a common hex socket.



## // **Optional Spade Hook**

The optional spade hook is a useful tool for positioning material to be mulched.



## // **Synchronous Belt Drive**

The positive drive, cog belt and sprocket design increase efficiency and require less maintenance than other drive types.

SEE THE FULL LIST OF FEATURES AND SPECS AT **LOFTNESS.COM**  
or call 800-828-7624.



## BUILD & PRICE TOOL

Choose the features and options you're looking for in a VM Logix Battle Ax with our online Build and Price tool. [loftness.com/build-and-price](http://loftness.com/build-and-price)



## VEGETATION MANAGEMENT EQUIPMENT FROM LOFTNESS

**battle**   
**AX** Skid-Steer



**bad**   
**AX**



**battle**   
**AX** Excavator



**kwik**   
**TRIM**



**battle**   
**AX** Extreme



**flail**   
**MOWER** HYDRO



**timber**   
**AX**



**flail**   
**MOWER** PTO



**PTO Battle Ax**  
(Coming Soon)

**cool flow**  
Auxiliary Hydraulic Cooler



// GRAIN BAGGING

// CROP SHREDDERS

// VEGETATION MANAGEMENT

// FERTILIZER EQUIPMENT

**LOFTNESS**  
**battle**   
**AX** Excavator

Call us or visit [loftness.com](http://loftness.com) for more information on the Battle Ax Excavator.

**LOFTNESS** 

Loftness Specialized Equipment  
P.O. Box 337  
Hector, Minnesota 55342 USA

Toll Free US & Canada: 800-828-7624  
International 320-848-6266  
email: [info@loftness.com](mailto:info@loftness.com)  
[www.loftness.com](http://www.loftness.com)



**LOFTNESS**

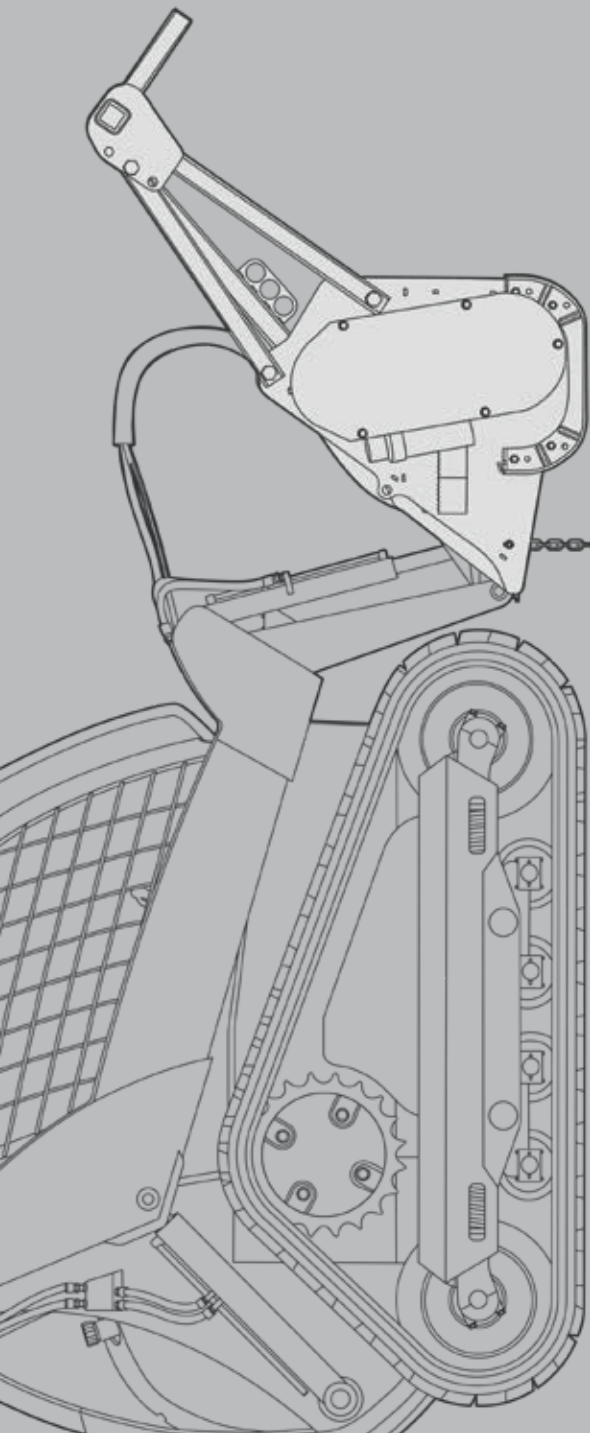
SPECIALIZED EQUIPMENT. UNLIMITED INNOVATION.

battle 

**AX** Skid-Steer

battle 

**AX** Extreme



**HEAD AND SHOULDERS ABOVE THE BEST**





# DON'T BITE OFF MORE THAN YOU CAN CHEW... OR LESS

The Battle Ax is a truly unique mulching head from Loftness with an innovative depth gauge design that's proven to perform better than any other bite-control rotor on the market. Features like this allow the Battle Ax to process material more thoroughly and complete jobs quicker than competitive units. Not to mention, our products are backed by a large dealer network and superior customer support from our 100-percent employee-owned company based in the U.S.A. We're proud of our Battle Ax mulching head...and so are the people who run them.



## L SERIES

**30-70** Hydraulic Horsepower Required  
Low Flow Skid Steers From **15-34.9 GPM**  
**61"** Cutting Width  
**13.5"** Diameter Rotor



## S SERIES

**50-150** Hydraulic Horsepower Required  
High Flow Skid Steers From **28-62.9 GPM**  
**61" & 71"** Cutting Width  
**17"** Diameter Rotor



## H SERIES

**50-150** Hydraulic Horsepower Required  
High Flow Skid Steers From **33-62.9 GPM**  
**88"** Cutting Width  
**17"** Diameter Rotor



## EXTREME

**For Prime Movers up to 375 Horsepower**  
**102"** Cutting Width  
**17"** Diameter Rotor

## // *Depth Gauges*

The Battle Ax rotor includes built-in depth gauges, which function similarly to raker teeth on chain saws to prevent the attachment from engaging too much material at one time. This unique design is more ideal for managing the amount of material being fed into the attachment than competitive ring-style rotors, which many operators find to be overly limiting, especially when using carbide cutting teeth.



## // *Two-Stage Cutting Chamber*

Skid steer Battle Ax models feature the Loftness-exclusive two-stage cutting chamber design, which is capable of processing material more thoroughly than competitive units by cutting material twice. Material is initially cut by the replaceable primary shear bar, located on the rear bumper. Then, a secondary shear bar behind the front bumper drives material back down into the knives for further processing before it is discharged to the ground.



## // *Machined Anti-Wrap Bearing Protection*

Rotor ends are machine turned to mate with close tolerance, machined anti-wrap rings, which minimize debris in the bearing chamber.



## // *Staggered/Spiral Tooth Pattern*

A staggered tooth arrangement ensures single-tooth contact with the work surface at all times while maintaining optimal rotor balance.



## // *Tree Pusher Bar*

Tree pusher bars with welded claw hooks are available on all models.



# L SERIES

Low Flow Skid Steers From 15-34.9 GPM  
30-70 Hydraulic Horsepower Required

## 61BSL

|                               |                               |
|-------------------------------|-------------------------------|
| Cutting Width                 | 61" (1.55 m)                  |
| Overall Width                 | 76" (1.9 m)                   |
| Number of Teeth               | 32                            |
| Weight (without mount)        | 1,407 LBS (638 kg)            |
| Crated Weight                 | 1,632 LBS (740 kg)            |
| Hydraulic Horsepower Range    | 30-70                         |
| Fixed Displacement Gear Motor | Up to 4,100 PSI - 15-34.9 GPM |

SPECIFICATIONS

## FEATURES

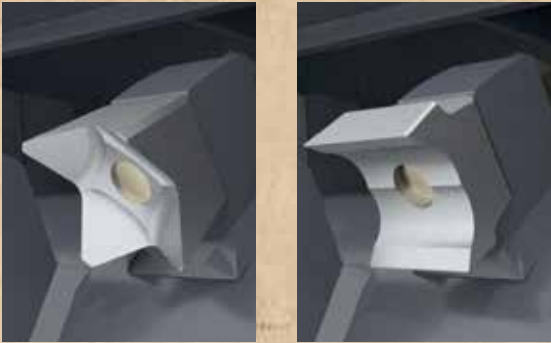
- › **Low-Flow Model** - 15-34.9 GPM
- › **“Battle Ax” Rotor Design** - Uses Built-In “Depth Gauges” to Control Cutting Depth, Like “Raker” Teeth on a Chainsaw
- › **Two-Stage Cutting Chamber** - 2 Shear Bars, Producing a Finer Mulch With Fewer Passes
- › **Adjustable Primary Shear Bar**
- › **Two Tooth Designs** - 4 Point Beaver Teeth or Ultra Sharp Reversible Planer
- › Efficient Staggered/Spiral Tooth Pattern
- › Universal Skid-Steer Mount
- › Optional – Tree-Pusher Bar With Claw Hooks
- › Fixed Displacement High Pressure Gear-Type Motor
- › With Case Drain
- › 3 Groove Banded V-Belt Drive
- › 13.5 Inch Diameter Rotor
- › 1750-2275 Rotor RPM
- › 1-3/4" Piloted Double Taper Roller Bearings
- › Increased Visibility
- › Machined Bearing Anti-Wrap
- › Steel Deflector Chains
- › On-Board PSI Gauge to Monitor Capacity
- › Premium Strength Steel Housing
- › Hoses Are Included (No Couplers)





## // High Pressure Gear Motor

The fixed-displacement high-pressure gear motor is a reliable, cost-effective workhorse. It operates at 1,750 to 2,275 rotor RPM and provides an optimal balance between speed and torque. This system was designed for skid steers up to 9,500 pounds delivering 15-34.9 GPM at up to 4,100 PSI. (Rated up to 70 hydraulic horsepower)



## // Two Teeth Options

The L Series Battle Ax is available with either 4-point beaver teeth or Quadco planer blades.



## // Tooth Mounting

The cutting teeth are mounted to the rotor with a single bolt. They can be easily reversed or replaced on the jobsite using a common hex socket.



## // Specialized Body Shape and Hitch Angle

Unlike competitive horizontal drum mulchers that use hydraulic doors to help reduce material, the Battle Ax is engineered to process more completely without a door.



## // Performance Monitoring

An integrated PSI gauge that monitors the hydraulic load is positioned for easy viewing from the skid steer cab. It helps keep the Battle Ax at the optimum hydraulic load for peak performance throughout an application.

SEE THE FULL LIST OF FEATURES AND SPECS AT **LOFTNESS.COM**  
or call 800-828-7624.





# S SERIES

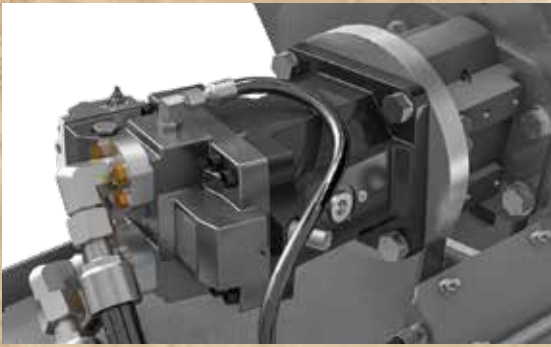
High Flow Skid Steers From 28-62.9 GPM  
50-150 Hydraulic Horsepower Required

|                                    | 61BS                          | 71BS                          |
|------------------------------------|-------------------------------|-------------------------------|
| Cutting Width                      | 61" (1.55 m)                  | 71" (1.8 m)                   |
| Overall Width                      | 76.2" (1.94 m)                | 86.2" (2.19 m)                |
| Number of Teeth                    | 30                            | 36                            |
| Weight (without mount)             | 2,500 LBS (1,134 kg)          | 2,700 LBS (1,225 kg)          |
| Crated Weight                      | 2,725 LBS (1236 kg)           | 2,925 LBS (1327 kg)           |
| Hydraulic Horsepower Range         | 50-150 Hydraulic HP           | 50-150 Hydraulic HP           |
| Fixed-Displacement Gear Motor      | Up to 4,300 PSI - 28-40 GPM   | Up to 4,300 PSI - 28-40 GPM   |
| Variable-Displacement Piston Motor | Up to 6,000 PSI - 28-62.9 GPM | Up to 6,000 PSI - 28-62.9 GPM |

SPECIFICATIONS

## FEATURES

- › **“Battle Ax” Rotor Design** - Uses Built-In “Depth Gauges” to Control Cutting Depth, Like “Raker” Teeth on a Chainsaw
- › **Two-Stage Cutting Chamber** - 2 Shear Bars, Producing a Finer Mulch With Fewer Passes
- › **Adjustable Primary Shear Bar**
- › **Three Tooth Designs** - Reversible Planer, Hard Surface Planer or Double Carbider
- › Efficient Staggered/Spiral Tooth Pattern
- › Universal Skid-Steer Mount
- › Adjustable Tree-Pusher Bar With Claw Hooks
- › Fixed Displacement High Pressure Gear-Type Motor
- › Variable Displacement Piston-Type Motor 90-110cc
- › Synchronous Belt Drive
- › 17 Inch Diameter Rotor
- › 1600-2300 Rotor RPM
- › 2-3/16" Piloted Double Taper Roller Bearings
- › Increased Visibility
- › Machined Bearing Anti-Wrap
- › Steel Deflector Chains
- › Adjustable Skid Shoes -1.5 to +0.5 Inches
- › On-Board PSI Gauge to Monitor Capacity
- › Premium Strength Steel Housing
- › Improved Hose Routing
- › Hoses Are Included (No Couplers)



## // *Two Motor Options*

The S Series Battle Ax is available with two hydraulic motor options to accommodate a wide range of customer needs and budgets. Choose between a reliable high-pressure, fixed-displacement gear motor, or upgrade to our advanced V-Drive variable-displacement piston motor, which automatically shifts the rotor RPM from the highest speed to a lower range for increased torque as needed.



## // *Three Teeth Options*

The S Series Battle Ax is available with three tooth options: Quadco planer blades, hard-surface Quadco blades and carbide teeth.



## // *Tooth Mounting*

The cutting teeth are mounted to the rotor with a single bolt. They can be easily reversed or replaced on the jobsite using a common hex socket.



## // *Specialized Body Shape and Hitch Angle*

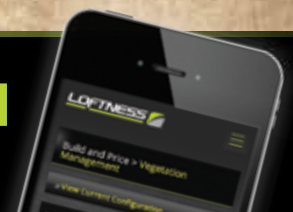
Unlike competitive horizontal drum mulchers that use hydraulic doors to help reduce material, the Battle Ax is engineered to process more completely without a door.



## // *Synchronous Belt Drive*

The positive drive, cog belt and sprocket design increases efficiency and requires less maintenance than other drive types.

SEE THE FULL LIST OF FEATURES AND SPECS AT **LOFTNESS.COM**  
or call 800-828-7624.





# H SERIES

High Flow Skid Steers From 33-62.9 GPM  
50-150 Hydraulic Horsepower Required

**BBBH**

|   |                               |
|---|-------------------------------|
| <b>Cutting Width</b>                      | 88" (2.2 m)                   |
| <b>Overall Width</b>                      | 101.5" (2.6 m)                |
| <b>Number of Teeth</b>                    | 44                            |
| <b>Weight (without mount)</b>             | 3,816 LBS (1,713 kg)          |
| <b>Crated Weight</b>                      | 3,990 LBS (1,809.8 kg)        |
| <b>Hydraulic Horsepower Range</b>         | 50-150 Hydraulic HP           |
| <b>Variable-Displacement Piston Motor</b> | Up to 6,000 PSI - 33-62.9 GPM |

SPECIFICATIONS

## FEATURES

- › **“Battle Ax” Rotor Design** - Uses Built-In “Depth Gauges” to Control Cutting Depth, Like “Raker” Teeth on a Chainsaw
- › **Two-Stage Cutting Chamber** - 2 Shear Bars, Producing a Finer Mulch With Fewer Passes
- › **Adjustable Primary Shear Bar**
- › **Two Tooth Designs** - Reversible Planer, Hard Surface Planer or Double Carbide
- › Efficient Staggered/Spiral Tooth Pattern
- › Optional Universal Skid-Steer Mount
- › Optional Custom Mounts Available
- › Manual or Hydraulic Pusher Bar With Claw Hooks
- › Variable Displacement Piston-Type Motor 90-110cc
- › Synchronous Belt Drive
- › 17 Inch Diameter Rotor
- › 1" Wall Rotor Tube
- › 1600-2300 Rotor RPM
- › 2-1/2" Piloted Double Taper Roller Bearings
- › Machined Bearing Anti-Wrap
- › Steel Deflector Chains
- › Adjustable Skid Shoes -1.5 to +0.5 Inches
- › On-Board PSI Gauge to Monitor Capacity
- › Premium Strength Steel Housing



## // **Variable-Displacement Piston Motor**

The standard V-Drive variable-displacement piston motor automatically shifts the rotor RPM from the highest speed to a lower range for increased torque as needed.



## // **Three Teeth Options**

The H Series Battle Ax is available with three tooth options: Quadco planer blades, hard-surface Quadco blades and carbide teeth.



## // **Tooth Mounting**

The cutting teeth are mounted to the rotor with a single bolt. They can be easily reversed or replaced on the jobsite using a common hex socket.



## // **Specialized Body Shape and Hitch Angle**

Unlike competitive horizontal drum mulchers that use hydraulic doors to help reduce material, the Battle Ax is engineered to process more completely without a door.



## // **Synchronous Belt Drive**

The positive drive, cog belt and sprocket design increases efficiency and requires less maintenance than other drive types.

SEE THE FULL LIST OF FEATURES AND SPECS AT **LOFTNESS.COM**  
or call 800-828-7624.





# EXTREME

For Prime Movers up to 375 Horsepower

## 80BE

|                      |                        |
|----------------------|------------------------|
| Cutting Width        | 80" (2 m)              |
| Overall Width        | 102" (2.6 m)           |
| Number of Teeth      | 30                     |
| Weight (Light Model) | 5,605 LBS (2,542.4 kg) |
| Weight (Heavy Model) | 6,680 LBS (3,030 kg)   |

SPECIFICATIONS

## FEATURES

- › **“Battle Ax” Rotor Design** - Uses Built-In “Depth Gauges” to Control Cutting Depth, Like “Raker” Teeth on a Chainsaw
- › **Extreme Triple Carbide Tooth With Mount Protection and Single Bolt Attachment**
- › **Adjustable Second Shear Bar**
- › **Protected Door Cylinder**
- › Efficient Staggered/Spiral Tooth Pattern
- › Optional Custom Mount Available
- › Fixed Tree-Pusher Bar With Claw Hooks
- › Optional Hydraulic Adjustable Pusher Bar
- › Twin Hydraulic Drive Motors
- › Bent-Axis Variable Speed Piston Motors
- › 52-108 GPM/Up to 6000 PSI
- › Dual Synchronous Belt Drive
- › 21 Inch Diameter Rotor
- › 1400-1900 Rotor RPM
- › 3" Piloted Double Taper Roller Bearings
- › Heavy-Duty Overhung Bearing Blocks
- › Machined Bearing Anti-Wrap
- › Steel Deflector Chains
- › Premium Strength Steel Housing
- › Top or Rear Hydraulic Connection



## // ***Bent-Axis Variable-Speed Piston Motors***

The Battle Ax Extreme features twin hydraulic motors. These variable-displacement piston motors automatically shift the rotor RPM from the highest speed to a lower range for increased torque as needed.



## // ***Extreme Triple Carbide Teeth***

The extreme triple carbide teeth are engineered specifically for the most powerful prime movers. They feature an overlapping cap design that helps prevent the tooth mounts from damage if the rotor is driven into rocks.



## // ***Tooth Mounting***

The cutting teeth are mounted to the rotor with a single bolt. They can be easily reversed or replaced on the jobsite using a common hex socket.



## // ***Moveable Door***

The hydraulically actuated door can be closed to trap material for further processing or opened to provide access for felling trees.



## // ***Protected Door Cylinder***

The hydraulic cylinder that actuates the door is shielded within the belt cover to help protect it from damage.



## BUILD & PRICE TOOL

Choose the features and options you're looking for in a VM Logix Battle Ax with our online Build and Price tool. [loftness.com/build-and-price](http://loftness.com/build-and-price)



## VEGETATION MANAGEMENT EQUIPMENT FROM LOFTNESS

**battle**   
**AX** Skid-Steer



**bad**   
**AX**



**battle**   
**AX** Excavator



**kwik**   
**TRIM**



**battle**   
**AX** Extreme



**flail**   
**MOWER** HYDRO



**timber**   
**AX**



**flail**   
**MOWER** PTO



**PTO Battle Ax**  
(Coming Soon)

**cool flow**  
Auxiliary Hydraulic Cooler



// GRAIN BAGGING

// CROP SHREDDERS

// VEGETATION MANAGEMENT

// FERTILIZER EQUIPMENT

**battle**   
**AX** Skid-Steer

**battle**   
**AX** Extreme

Call us or visit [loftness.com](http://loftness.com) for more information on the Battle Ax Skid-Steer or Battle Ax Extreme.

**LOFTNESS** 

Loftness Specialized Equipment  
P.O. Box 337  
Hector, Minnesota 55342 USA

Toll Free US & Canada: 800-828-7624  
International 320-848-6266  
email: [info@loftness.com](mailto:info@loftness.com)  
[www.loftness.com](http://www.loftness.com)