



# ARTICULATED DUMPERS

From 2,200 to 22,000 lb payload. Tough, compact and efficient



[www.SoundHM.com](http://www.SoundHM.com)







**2,200, 2,600, 3,300 lb**  
From 0.74 to 1.18 cu yd heaped hopper capacity

4

- D100AHA | D100AHG
- D120AHA | D120AHG
- D150AHA | D150AHG



**6,600, 7,700 lb**  
From 2.28 to 2.79 cu yd heaped hopper capacity

8

- D301AHG
- D350AHG



**13,200, 22,000 lb**  
From 4.13 to 5.10 cu yd heaped hopper capacity

12

- D601AHG | D601AP | D601APG
- D1001APG



**13,200, 22,000 lb - REVERSIBLES**  
From 4.13 to 5.10 cu yd heaped hopper capacity

16

- DR601AHG
- DR1001AHG



**3,300 lb ELECTRIC**  
1.18 cu yd heaped hopper capacity

20

- D151AEG

**AUSAnow** 24

**Technical data** 26

**Dimensions** 32

**Equipment** 34

ⓘ Images throughout the catalog may refer to non-standard machines. Products are subject to modifications without prior notice.



# ARTICULATED DUMPERS

## 2,200 - 2,600 - 3,300 lb

AUSA's most compact range of dumpers, available with three different payloads and they can be configured with a high-tipping skip or a swing skip.

These models are perfect for municipal works, landscaping projects, small demolitions, or any applications that require highly maneuverable vehicles that are extremely compact in size.

Thanks to their permanent 4WD, they can handle narrow terrain and steep slopes.



### FEATURED EQUIPMENT

**Folding ROPS** for ease of transportation. **Spacious driver's position** for comfortable and safe handling. **Rotating beacon** for increased visibility on the jobsite. **Hydrostatic transmission** to ensure smooth and safe operation for the user. **Easy-to-access components** to reduce downtime for maintenance. **Ergonomic joystick** that controls the movements of the skip and the transmission. **Axles with final epicyclic gearing** that provides improved traction.





**D100AHA 2,200 lb**  
UNLOADING SYSTEM HIGH  
POWER 20.9 hp WIDTH 43.3 in TRANSMISSION HYDROSTATIC



**D100AHA COMPACT 2,200 lb**  
UNLOADING SYSTEM HIGH  
POWER 20.9 hp WIDTH 39.4 in TRANSMISSION HYDROSTATIC



**D100AHG 2,200 lb**  
UNLOADING SYSTEM ROTATING  
POWER 20.9 hp WIDTH 43.3 in TRANSMISSION HYDROSTATIC



**D120AHA 2,600 lb**  
UNLOADING SYSTEM HIGH  
POWER 20.9 hp WIDTH 47.6 in TRANSMISSION HYDROSTATIC



**D120AHG 2,600 lb**  
UNLOADING SYSTEM ROTATING  
POWER 20.9 hp WIDTH 47.6 in TRANSMISSION HYDROSTATIC



**D150AHA 3,300 lb**  
UNLOADING SYSTEM HIGH  
POWER 20.9 hp WIDTH 58.3 in TRANSMISSION HYDROSTATIC



**D150AHG 3,300 lb**  
UNLOADING SYSTEM ROTATING  
POWER 20.9 hp WIDTH 58.3 in TRANSMISSION HYDROSTATIC





# ARTICULATED DUMPERS

## 6,600 - 7,700 lb

Dumpers designed for major earthworks in urban and intercity environments settings or in private residential areas. They have an excellent power-to-weight ratio, making them maneuverable and allowing them to easily tackle with steep slopes.

All components have been designed to ensure quick and simple maintenance with minimal downtime.



### FEATURED EQUIPMENT

**Folding ROPS** for ease of transportation. **Spacious driver's position** for comfortable and safe handling. **Hydrostatic transmission** to ensure smooth and safe operation for the user. **Easy-to-access components** to reduce downtime for maintenance. **Ergonomic joystick** that controls the movements of the skip and the transmission. **Seat belt with a buckle sensor and seat with presence sensor** to prevent the machine from being used without following the minimum safety procedures. **Negative brake** which is automatically engaged when the engine is turned off.





**D301AHG 6,600 lb**  
UNLOADING SYSTEM ROTATING  
POWER 24.8 hp WIDTH 68.9 in TRANSMISSION HYDROSTATIC



**D350AHG 7,700 lb**  
UNLOADING SYSTEM ROTATING  
POWER 44 hp WIDTH 72.8 in TRANSMISSION HYDROSTATIC





# ARTICULATED DUMPERS

## 13,200 - 22,000 lb

Our range of dumpers with the highest payloads are designed for large-scale earthworks, especially on intercity construction sites and in open spaces. These are powerful and robust models that are equipped with the latest technology to minimize fuel consumption.

They also have a digital display in the driver's cab which provides all of the machine's real-time information, allowing you to run self-diagnostics without the need for any external tools.



### FEATURED EQUIPMENT

**Digital screen** to access machine information and on board diagnostics. **Smart Stop** (optional), which switches off the machine's engine when it is not in use, to reduce running cost. **Easy-to-access internal components** to reduce costs and facilitate maintenance. **The limited-slip differential** on both axles offers market-leading off-road drive capabilities. **Seat belt with a buckle sensor and seat with presence sensor** to prevent the machine from being used without following the minimum safety procedures. **Negative brake** which is automatically engaged when the engine is turned off. **Camera with 360 degree vision** on the skip.





**D601AHG** 13,200 lb  
 UNLOADING SYSTEM ROTATING  
 POWER 74.3 hp WIDTH 87 in TRANSMISSION HYDROSTATIC



**D601AP** 13,200 lb  
 UNLOADING SYSTEM FRONTAL  
 POWER 74.3 hp WIDTH 87 in TRANSMISSION TORQUE CONVERTER



**D601APG** 13,200 lb  
 UNLOADING SYSTEM ROTATING  
 POWER 74.3 hp WIDTH 87 in TRANSMISSION TORQUE CONVERTER



**D1001APG** 22,000 lb  
 UNLOADING SYSTEM ROTATING  
 POWER 74.3 hp WIDTH 94.9 in TRANSMISSION TORQUE CONVERTER



# REVERSIBLE DUMPERS

## 13,200 - 22,000 lb

The reversible design allows the entire driver's cab to turn 180°: seat, steering wheel, pedals, joystick...giving the operator a clear view of their surroundings at all times. This system also allows you to always use front-wheel drive, thus reducing the number of maneuvers and increasing load-moving speed.

AUSA's reversible dumpers are equipped with the latest technology to reduce fuel consumption and improve the safety of the operator and area around them.

### FEATURED EQUIPMENT

**Access to the driving position** on both sides of the machine. **ECO Mode** to automatically regulate the RPM to ensure low consumption and reduced maintenance costs. **Digital screen** with all of the information about the machine and self-diagnostics. **Hill holder**, which keeps the machine stationary on any slope, without putting your foot on the brake. **The limited-slip differential** on both axles offers market-leading off road drive capabilities. **Smart Stop**, which switches off the machine's engine when it is not in use, to make it more cost-effective. **Negative brake** which is automatically engaged when the engine is turned off. **Camera with 360 degree vision** on the skip.







**DR601AHG** 13,200 lb  
UNLOADING SYSTEM ROTATING  
POWER 74.3 hp WIDTH 87 in TRANSMISSION HYDROSTATIC



**DR1001AHG** 22,000 lb  
UNLOADING SYSTEM ROTATING  
POWER 74.3 hp WIDTH 94.9 in TRANSMISSION HYDROSTATIC



# ELECTRIC DUMPER

## 3,300 lb

Electric power for the whole day. The D151AEG dumper is designed to deliver a full day work on a single charge.

And whenever necessary, it can be connected directly to the mains via a single-phase or three-phase socket. It also features a fast charger.

Thanks to its minimal noise emissions, it can be used in more applications than a traditional dumper, as well as overnight in residential or noise-restricted areas.

Also, with permanent 4WD, this powerful dumper can tackle the most challenging terrain.



### FEATURED EQUIPMENT

**Charging cable** in the vehicle, so it can be plugged in at any time. **Folding ROPS roll bar** to make it easier to transport. **Driving position with plenty of space** for comfortable and safe driving. **Digital screen** to access machine information and on board diagnostics. **Hill holder**, which keeps the machine stationary on any slope, without putting your foot on the brake. **Easy-to-access components** to reduce downtime for maintenance. **Ergonomic joystick** that controls the skip movements and the transmission. **Seat belt with a buckle sensor and seat with presence sensor** to prevent the machine from being used without following the minimum safety procedures. **Negative brake** that is applied automatically when the motor stops. **Energy recovery system** that increases the battery range.





Battery capacity  
Up to 12.4 kWh

Charging from  
20 to 80%  
2 h\*

Battery type  
Li-Ion



**D151AEG 3,300 lb**  
UNLOADING SYSTEM ROTATING  
POWER 23.2 hp WIDTH 58.3 in TRANSMISSION ELECTRIC

\* Subject to environmental conditions and to the kind and power of charging station.



All AUSA dumpers can be equipped with AUSAnow, the software used to remotely control machines, providing you with all real-time information.



**Control your fleet of machines**

From your office or with your mobile phone. Control all of your AUSA machines in real time. With AUSAnow you can anticipate any faults and maintenance, to reduce downtime.



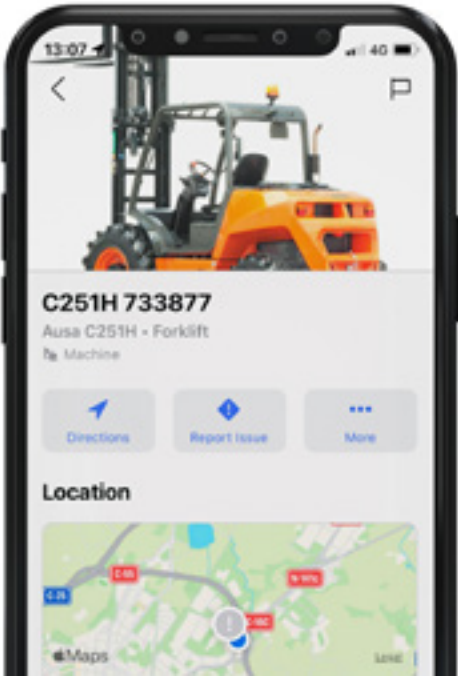
**Get information and make decisions**

View or create your own personalised charts to obtain in-depth information about the operation of your machines and make decisions that are based on analytical information.



**Connect security alarms**

Establish a schedule and security perimeter. If one of your machines is moved outside the established area, AUSAnow will alert you straight away so that you can deal with it.



**Data, data and more data**

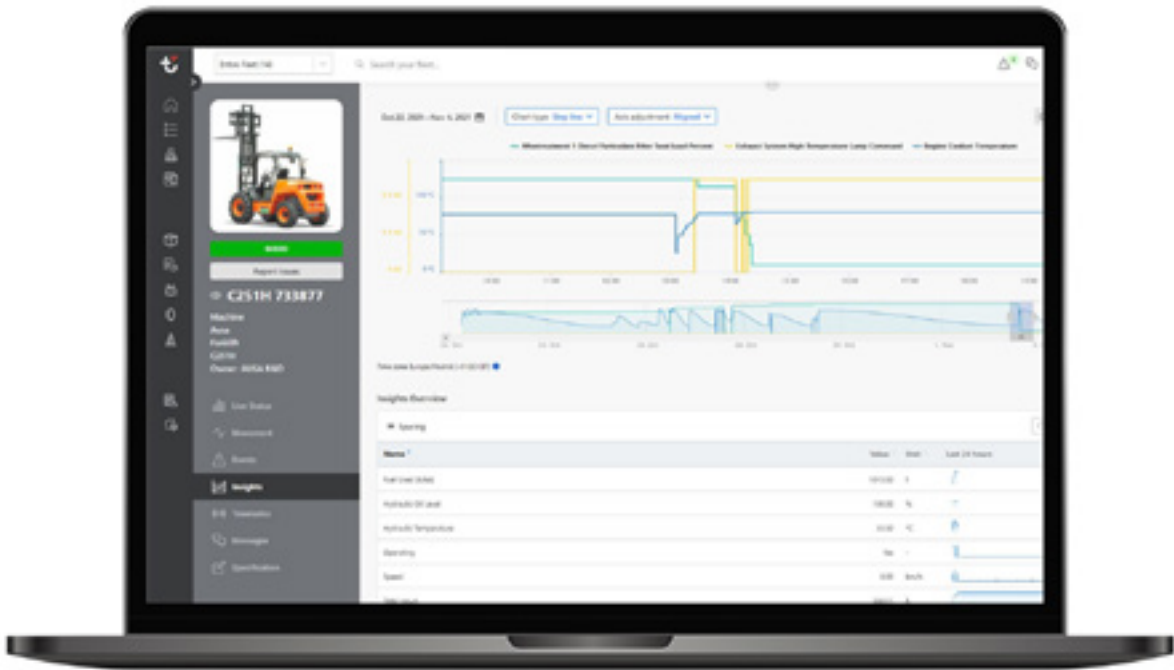
AUSAnow allows you to obtain advanced real-time information about your machine fleet. View advanced charts for customized time periods based on the parameters set by you.



**Reduce downtime**

AUSAnow connects you to your dealer or rental company, so that any appropriate maintenance can be performed. If you have a problem, AUSAnow provides you with a direct channel of communication with your machine vendor, so that it can be resolved as quickly as possible.

- Preventive alerts
- Attach images



**Alarms for your peace of mind**

Activate AUSA's recommended maintenance alerts and keep your machines in optimal condition. And, for your security, you can program geofences and receive alerts if they go outside the established boundaries.

- Customize a schedule
- Set a perimeter



# TECHNICAL DATA

		D151AEG	D100AHA / COMPACT
GENERAL	UNIT		
Unloading system	-	Rotating	High
Load capacity	lb	3,300	2,200
Chassis	-	Articulated	Articulated
Water hopper capacity	cu yd	0.68	0.45
Level hopper capacity	cu yd	0.82	0.52
Heaped hopper capacity	cu yd	1.18	0.74
Empty weight *	lb	3,450	2,866
Transmission	-	Electric	Hydrostatic
Reversibility	-	No	No
ENGINE			
Brand / Model	-	-	KUBOTA D1105-E4B
Power	hp	-	20.9
Peak/Nominal power	hp	23.2 / 10.2	-
Operating speed	rpm	-	2,400
Peak torque	N.m	130	71.4@1,600
No. of cylinders	-	-	3
Emissions	-	Zero emissions	Tier 4
Noise	dB(A)	-	101
DRIVING			
Max. speed	mph	9.3	9.3
Maximum gradient	%	35	38
External turning radius	in	133.4	120.5
Traction	-	4WD	4WD
Tires	-	10.0/75-15.3	27x8.5-15 / 6.5/80-12
HYDRAULIC SYSTEM			
Hydraulic circuit	-	0.74 cu in. Gear pump	0.49 cu in. Gear pump
Flow rate	gal/min	4.7	4.5
Working pressure	psi	2,465	2,610
TANK CAPACITY			
Fuel	gal	-	6.1
Hydraulic system	gal	6.5	5.6
BRAKES			
Service	-	Sealed. Hydraulic drive	Sealed. Mechanical drive
Parking	-	Negative brake and electro-hydraulic release	Mechanical drive
BATTERY			
Battery type	-	Lithium-Ion Battery (NCM)	-
Gross capacity	kWhV	9.3	-
System voltage	-	48	-
Autonomy		One intense shift ***	-
CHARGE	-		
Charger	-	Integrated	-
Charging time 20-80%	-	2h (@230V) **	-
Charging time 20-80% (external fast charger)	-	1h 24min (@415V) **	-
Charging cable plug type		16A 110V (yellow); 16A 230V (blue); 16A 415V (red)	-

\* It may change due to optional equipment.    \*\* Subject to environmental conditions and to the kind and power of charging station.    \*\*\* Subject to environmental conditions and the kind of use. For temperatures under 32°F it is recommended to fit the Long Range pack.

D100AHG		D120AHA		D120AHG	
Rotating		High		Rotating	
2,200		2,600		2,600	
Articulated					
0.43		0.56		0.54	
0.51		0.67		0.65	
0.71		0.92		0.91	
2,866		3,031		3.031	
Hydrostatic					
No					
KUBOTA D1105-E4B					
20.9					
-					
2,400					
71.4@1,600					
3					
Tier 4					
101					
9.3		10.5		10.5	
38		48		48	
119.5		123		121.8	
4WD		4WD		4WD	
27x8.5-15		10.0/75-15.3		10.0/75-15.3	
0.49 cu in. Gear pump					
4.5					
2,610					
6.1		6.1		6.1	
5.6		5.6		5.6	
		Sealed. Mechanical drive			
		Mechanical drive			
-					
-					
-					
-					
-					
-					
-					
-					



# TECHNICAL DATA

		D150AHA	D150AHG
GENERAL		UNIT	
Unloading system	-	High	Rotating
Load capacity	lb	3,300	3,300
Chassis	-	Articulated	
Water hopper capacity	cu yd	0.79	0.68
Level hopper capacity	cu yd	0.89	0.82
Heaped hopper capacity	cu yd	1.10	1.18
Empty weight	lb	3,329	3,329
Transmission	-	Hydrostatic	
Reversibility	-	No	
ENGINE			
Brand / Model	-	KUBOTA D1105-E4B	
Power	hp	20.9	
Operating speed	rpm	2,400	
Torque	N-m	71.4@1,600	
No. of cylinders	-	3	
Emissions	-	Tier 4	
Injection	-	Mechanical pump	
Exhaust aftertreatment	-	-	
Noise	dB(A)	101	
DRIVING			
Max. speed	mph	8.7	8.7
Maximum gradient	%	40	40
External turning radius	in	128.3	128.3
Traction	-	4WD	4WD
Tires	-	10.0/75-15.3	10.0/75-15.3
HYDRAULIC SYSTEM			
Hydraulic circuit	-	0.49 cu in. Gear pump	
Flow rate	gal/min	4.5	4.5
Working pressure	psi	2,610	2,610
TANK CAPACITY			
Fuel	gal	6.1	6.1
Hydraulic system	gal	5.6	5.6
BRAKES			
Service	-	Sealed. Mechanical drive	
Parking	-	Mechanical drive	

D301AHG		D350AHG		D601AHG	
		Rotating			
6,600		7,700		13,200	
		Articulated			
1.28		1.33		2.18	
1.72		2.34		3.21	
2.28		2.79		4.13	
5,070		6,241		9,898	
Hydrostatic					
No					
KUBOTA V1505-E4B		KUBOTA D1803-CR-T-E5B		DEUTZ TD3.6 L4	
24.8		44		74.3	
2,300		2,400		2,200	
92.6@1,700		150.5@1,500		330@1,600	
4		3		4	
Tier 4		Tier 4f		Tier 4f	
Mechanical pump		Common Rail and electronic management		Common Rail	
-		DPF (Diesel particulate filter)		DOC (Diesel oxidation catalyst)	
101		101		101	
12.4		11.8		15.5	
50		54		45	
155.7		177.7		232.3	
4WD		4WD		4WD	
11.5/80-15.3		11.5/80-15.3		405/70-20	
0.73 cu in. Gear pump				1.5-1.4 cu in. Two gear pump	
6.6		7		13.2	
2,538		2,465		2,610	
9.9		11.6		18.2	
9.9		10.5		15.8	
Sealed. Hydraulic drive					
Negative brake and electro-hydraulic release					



# TECHNICAL DATA

		D601AP	D601APG
GENERAL		UNIT	
Unloading system	-	Frontal	Rotating
Load capacity	lb	13,200	13,200
Chassis	-	Articulated	
Water hopper capacity	cu yd	2.47	2.18
Level hopper capacity	cu yd	3.46	3.21
Heaped hopper capacity	cu yd	4.16	4.13
Empty weight	lb	9,900	10,353
Transmission	-	Torque converter	
Reversibility	-	No	
ENGINE			
Brand / Model	-	DEUTZ TD3.6 L4	
Power	hp	74.3	
Operating speed	rpm	2,200	
Torque	N·m	330@1,600	
No. of cylinders	-	4	
Emissions	-	Tier 4f	
Injection	-	Common Rail	
Exhaust aftertreatment	-	DOC (Diesel oxidation catalyst)	
Noise	dB(A)	101	
DRIVING			
Max. speed	mph	15.5	15.5
Maximum gradient	%	45	45
External turning radius	in	232.3	232.3
Traction	-	4WD	4WD
Tires	-	405/70-20	405/70-20
HYDRAULIC SYSTEM			
Hydraulic circuit	-	1.4-1.4 cu in. Two gear pump	
Flow rate	gal/min	12.1	12.1
Working pressure	psi	2,610	2,610
TANK CAPACITY			
Fuel	gal	18.2	18.2
Hydraulic system	gal	15.8	15.8
BRAKES			
Service	-	Sealed. Hydraulic drive	
Parking	-	Negative brake and electro-hydraulic release	

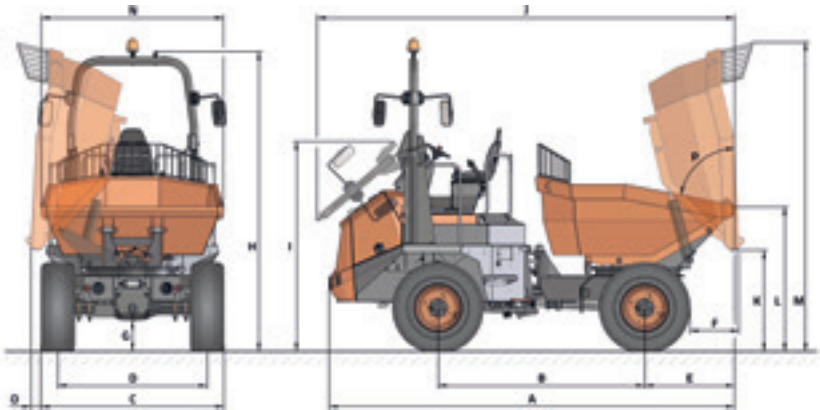
D1001APG	DR601AHG	DR1001AHG
Rotating		
22,000	13,200	22,000
Articulated		
2.42	2.18	2.42
4.32	3.21	4.32
5.10	4.13	5.10
11,431	10,648	11,133
Torque converter	Hydrostatic	
No	Yes	
DEUTZ TCD3.6 L4 HT	DEUTZ TD3.6 L4	DEUTZ TCD3.6 L4 HT
74.3	74.3	74.3
2,200	2,200	2,200
390@1,300	330@1,600	390@1,300
4	4	4
Tier 4f	Tier 4	Tier 4
Common Rail	Common Rail and electronic management	Common Rail and electronic management
DOC (Diesel oxidation catalyst)	DOC (Diesel oxidation catalyst)	DOC (Diesel oxidation catalyst)
101	101	101
15.5	15.5	13.7
45	45	45
247.5	232.3	247.5
4WD	4WD	4WD
500/60-22.5	405/70-20	500/60-22.5
1.4-1.4 cu in. Two gear pump	1.5-1.4 cu in. Two gear pump	
12.1	13.2	13.2
2,610	2,610	2,610
18.2	18.2	18.2
15.8	15.8	15.8
Sealed. Hydraulic drive		
Negative brake and electro-hydraulic release		



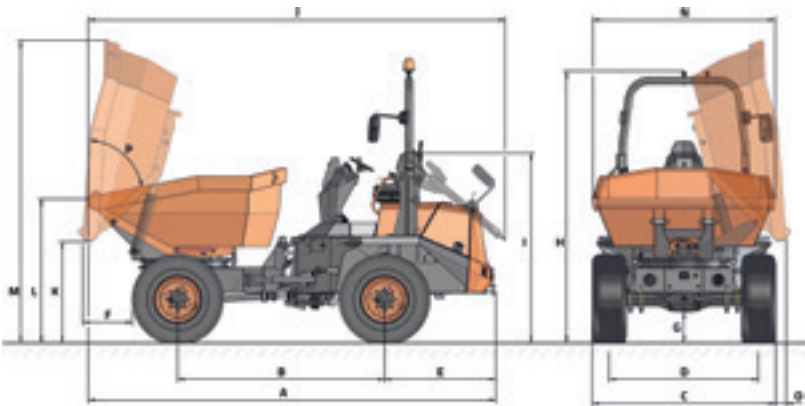
DIMENSIONS

DIMENSIONS

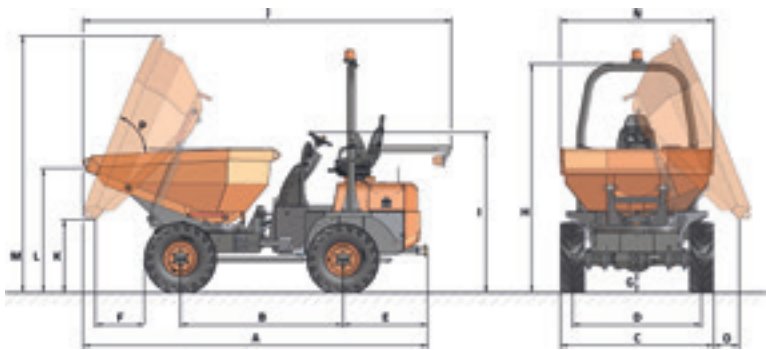
DR601AHG / DR1001AHG



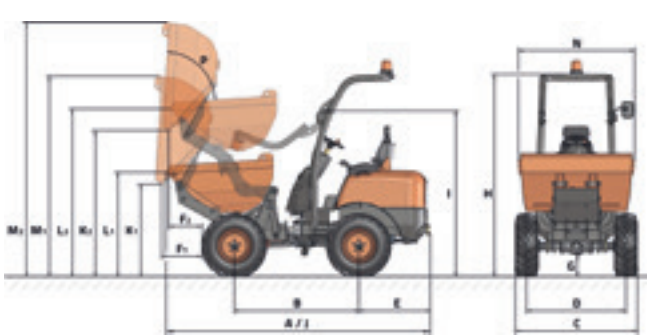
D601AHG / D601APG / D1001APG



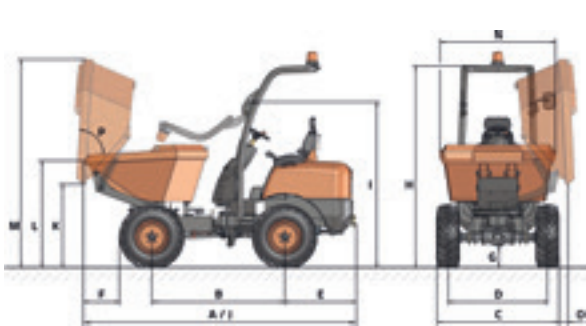
D301AHG / D350AHG



D100AHA / D120AHA / D150AHA



D151AEG / D100AHG / D120AHG / D150AHG



	D151AEG	D100AHA		D100AHA COMPACT		D100AHG	D120AHA		D120AHG	D150AHA	
DIMENSIONS (in)											
A	132.3	126		126		126	126		126		126
B	65	59.1		59.1		59.1	59.1		59.1		59.1
C	58.3	43.3		39		43.3	47.6		47.6		58.3
D	47	34.1		32.1		34.1	36.4		36.4		47
E	34.8	33.9		33.9		33.9	33.9		33.9		33.9
F	18.1	19.7	18.1	21,5	19,9	19.7	18,1	16,5	18,1	18.1	16.5
G	9.8	8.3		6.7		8.3	9.8		9.8		9.8
H	102.4	94.5		92.9		94.5	96.1		96,1		96.1
I	68.1	77.2		75.6		77.2	78.7		78,7		78.7
J	127.4	126		126		126	126		126		126
K	39.4	37.4	67.3	35.8	65.7	37.4	39	68.9	39,4	39	68,9
L	50.8	48.4	78	46.5	76.4	48.4	50	79.5	50	50	79,5
M	98.4	88.6	118.5	87	116.9	92.5	90.6	120.1	94,5	90.6	120.1
N	55.1	39.4		39.4		39.4	47.2		47,2		55.1
O	5.3	-		-		12.2	-		10,2		-
DIMENSIONS (°)											
P	83	83		83		83	83		83		83

1 ▲ | ▲ 2

1 ▲ | ▲ 2

1 ▲ | ▲ 2

1 ▲ | ▲ 2

D150AHG	D301AHG	D350AHG	D601AHG	D601AP	D601APG	D1001APG	DR601AHG	DR1001AHG
129.9	163	164.2	193.3	183.9	193.3	197.6	193.3	197.6
63	76.8	77.2	98	98	98	105.9	98	105.9
58.3	68.9	72.4	87	87	87	94.9	87	94.9
47	57.5	61.2	70.9	70.9	70.9	75.6	70.9	75.6
33.9	47.2	40.4	52.8	52.8	52.8	52.8	42.5	39
18.1	22.8	23.6	22.8	28.9	22.8	19.1	22.8	19.1
9.8	10.2	10.2	15	15	15	16.1	15	16.1
96.1	105.1	109.1	129.1 (122.4*)	129.1 (122.4*)	129.1 (122.4*)	143.3 (133.1*)	142.1 (131.9*)	143.3 (133.1*)
78.7	72.6	76.4	90.2	88.2	90.2	100.8	99.6	100.8
129.9	126	175.2	198	194.9	198	202.4	198	202.4
39.4	34.2	34.3	48	16.5	48	49.6	48	49.6
50.8	56.1	58.7	68.5	68.9	68.5	71.7	68.5	71.7
98.4	116.1	121.7	143.3	98	143.3	150.8	146.5	155.1
55.1	68.9	72.8	86.6	85	86.6	91.7	86.6	91.7
5.3	9.8	12.2	4.3	-	4.3	6.1	4.3	6.1
83	71.5	65	75	75	75	75	75	75

\* With closed cab.



	D 151 AEG	D 100 AHA / AHG	D 120 AHA / AHG	D 150 AHA / AHG	D 301 AHG	D 350 AHG	D 601 AHG	D 601 AP	D 601 APG	D 1001 APG	DR 601 AHG	DR 1001 AHG
DRIVING POSITION												
Front folding ROPS protective structure		●	●	●								
Rear folding ROPS protective structure	●	○	○	○	●	●	●	●	●	●	●	●
FOPS protective roof on ROPS protective structure		○	○	○								
Closed ROPS/FOPS cab with heating							○	○	○	○	○	○
Closed ROPS/FOPS cab with heating and air conditioning							○	○	○	○	○	○
SAFETY												
Seat belt with fasten sensor	●				●	●	●	●	●	●	●	●
Seat with operator´s presence sensor	●				●	●	●	●	●	●	●	●
Rotating beacon		●	●	●		●						
LED rotating beacon	●				●		●	●	●	●	●	●
LED green rotating beacon	○				○		○	○	○	○	○	○
Acoustic warning for reverse gear	●	●	●	●	●	●	●	●	●	●	●	●
Battery master switch	●				●		●	●	●	●	●	●
Emergency stop	●	○	○	○	●		●	●	●	●	●	●
Anti-vandal security system	●	●	●	●	●	●	●	●	●	●	●	●
Hill Holder - hill-start assist	●						●				●	●
Negative brake	●				●	●	●	●	●	●	●	●
Full visibility camera on the skip side							●	●	●	●	●	●
Full visibility cameras on the skip and counterweight sides and proximity sensors					○	○						
Full visibility camera on the counterweight side and proximity sensors							○	○	○	○	○	○
Protective grille on the skip							○	○	○	○	●	●
Reflective decals on rear body	○	○	○	○	○	○	○	○	○	○	○	○
LIGHTING AND DRIVING												
Road lights	○	○	○	○	○	○	○	○	○	○	○	○
Front LED working lights	○				○							
Rear-view mirror	●	●	●	●	●	●	●	●	●	●	●	●
Second rear-view mirror					○		○	○	○	○	●	●
Third rear-view mirror							○	○	○	○	○	○
COMFORT												
Adjustable ergonomic seat	●	●	●	●	●	●	●	●	●	●	●	●
Highly comfortable seat, fully adjustable	○	○	○	○								
All-in-one joystick	●	●	●	●	●	●	●	●	●	●	●	●
ADVANCED EQUIPMENT												
Electric transmission	●											
Hydrostatic transmission		●	●	●	●	●	●				●	●
Limited-slip differential on both axles							●	●	●	●	●	●
ECO Mode system							●				●	●
Smart Stop system							○	○	○	○	○	○
Digital display	●						●	●	●	●	●	●
AUSAnow fleet manager	○	○	○	○	○	○	○	○	○	○	○	○
Long Range Pack	○											

	D 151 AEG	D 100 AHA / AHG	D 120 AHA / AHG	D 150 AHA / AHG	D 301 AHG	D 350 AHG	D 601 AHG	D 601 AP	D 601 APG	D 1001 APG	DR 601 AHG	DR 1001 AHG
ACCESSORIES												
Metal engine cover	●	○	○	○	●							
Front mudguards	○				○	○	○	○	○	○	●	●
Reverse gear acoustic warning disable switch	○	○	○	○	○	○	○	○	○	○	○	○
Car radio							○	○	○	○	○	○
Waterproof document holder	○	○	○	○	○	○	○	○	○	○	○	○
Biodegradable hydraulic oil	○	○	○	○	○	○					○	
Water separator diesel filter					○	●						
Air filter with cyclone pre-filter					○	○						
Ball and towing hitch					○	○	○	○	○			
Ball and towing hitch with power socket	○	○	○	○								
Rockinger hitch						○						
Rockinger hitch with power socket							○		○	○	○	○
Power socket for the trailer					○	○	○	○	○	○	○	○
TIRES												
Narrow tires 10.0/75-15.3" TL - 14PR					○							
Turf tires 400/60 -15.5" TL 14PR					○	○						
Pack of 4 turf wheels 400/60 -15.5" TL 14PR (Additional)					○	○						
Turf tires 400/70-20" TL - 14PR							○	○	○		○	
Pack of 4 turf wheels 400/70-20" TL - 14PR (Additional)							○	○	○		○	
Pack of 4 turf wheels 560/45-22.5" TL (Additional)							○	○	○			
SPARE PARTS												
Spare wheels	○	○	○	○	○	○		○	○	○	○	○
1,000 h maintenance kit	○	○	○	○	○	○	○	○	○	○	○	○

● Standard ○ Optional



**AUSA US CORP**  
**9481 Industrial Center Dr, Unit 3,**  
**Ladson, SC 29456**  
**USA**  
**Tel. (843) 202 0387**  
**[ausa.us@ausa.com](mailto:ausa.us@ausa.com)**  
**[www.ausa.com](http://www.ausa.com)**

AUSA Center: +34 93 874 7311 - [ausa@ausa.com](mailto:ausa@ausa.com)  
AUSA Spain: +34 91 669 00 06 [ausa.madrid@ausa.com](mailto:ausa.madrid@ausa.com)  
AUSA France: +33 (0) 4 68 54 38 97 - [ausa.france@ausa.com](mailto:ausa.france@ausa.com)  
AUSA U.K.: +44 (0)7703 60 9009 - [ausa.uk@ausa.com](mailto:ausa.uk@ausa.com)  
AUSA Central Europe: +49 2384 9415725 - [kontakt@ausa.com](mailto:kontakt@ausa.com)  
AUSA U.S.: +1 (310) 426 2305 - [ausa.us@ausa.com](mailto:ausa.us@ausa.com)  
AUSA CHINA: +86 10 8598 7386 - [ausa.china@ausa.com](mailto:ausa.china@ausa.com)



888.543.1263  
[www.SoundHM.com](http://www.SoundHM.com)

1809 Blue Clay Road  
Wilmington, NC 28405  
[Info@SoundHM.com](mailto:Info@SoundHM.com)



[www.ausa.com](http://www.ausa.com)