



ANACONDA[®]

A McLanahan Company

HEAVY-DUTY. HIGH-PERFORMANCE.

Driving innovation through the design and manufacture of mobile crushing, screening, conveying and washing equipment.



Sound Heavy Machinery

1809 Blue Clay Road
Wilmington, NC 28405
910.782.2477
info@SoundHM.com
www.SoundHM.com

anacondaequipment.com

ABOUT US

Anaconda Equipment was originally formed in 2005 as sub-contract specialists before establishing itself as a reliable equipment manufacturer under the Anaconda brand in 2008. To date, more than 2,000 machines have been shipped to more than 50 countries over six continents.

Anaconda specialises in the design and manufacture of mobile crushing, screening, conveying and washing equipment to service the recycling, loading, aggregate and organics industries. The company has a 4,970 sqm (53,500 sqft) state-of-the-art manufacturing facility in County Tyrone, Northern Ireland, and a full-service master distribution facility in Pennsylvania, USA.



**SPECIALISTS IN THE DESIGN AND
MANUFACTURE OF MOBILE CRUSHING,
SCREENING, CONVEYING AND
WASHING EQUIPMENT.**

MORE THAN 2000 MACHINES SOLD INTO 50 COUNTRIES ACROSS 6 CONTINENTS



WHY ANACONDA?



24/7 TECHNICAL SUPPORT
Dedicated team to assist with any technical support issues



ENGINEERING DESIGN EXPERTISE
20 years designing and manufacturing high performing machinery to suit many applications



AFTER-SALES
Spares held in stock with local dealers ready for dispatch



OUR PEOPLE
Anaconda is committed to investing in its people by continuously developing employee skills. Training, development and career progression are core priorities for the company. A stronger workforce enables us to better serve our customers



FIRST CLASS REPUTATION
Throughout Anaconda's history, quality and minimizing downtime have been critically important. For more than 20 years, Anaconda has earned praise for delivering high-quality equipment while maintaining a strong focus on after-sales and technical support. Since downtime costs customers money, Anaconda's rapid response and resolution times help ensure operations stay on track.

**CRUSHING
SCREENING
SCALPING
FEEDING
CONVEYING
WASHING**



TRACKED JAW CRUSHERS

THE ANACONDA JAW CRUSHER IS ENGINEERED TO MEET THE TOUGHEST DEMANDS OF PRIMARY CRUSHING APPLICATIONS WHERE DURABILITY AND PERFORMANCE ARE ESSENTIAL.

Anaconda's Jaw Crushers contain aggressive and powerful crushers that bring together the proven ability of the Universal Jaw Crusher within an innovative Anaconda tracked solution.

The J12 Jaw Crusher has a chamber size of 1140mm x 700mm (44" x 28") allowing the J12 to make light work of any application.

Utilising an extremely fuel efficient and powerful hydraulic system allows for increased levels of productivity. The sheer strength and reliability of the Anaconda Jaw Crusher will keep your operation crushing even in the harshest conditions.

FEATURES AND BENEFITS

ENGINE OPTIONS:

CUMMINS IPU - L9 380 - TIER 2 (283Kw) - ROW
CUMMINS IPU - L9 380 - STAGE 5 (283Kw) - EU & USA
CAT - 9.3 - LRC - TIER 2 (310Kw) - ROW
CAT - 9.3 - STAGE 5 (310Kw) - EU & USA

UNIVERSAL CRUSHER JAW CHAMBERS

ALL HYDRAULIC TOGGLE AND TENSION ROD SET-UP

CSS RANGE 50-190MM (2"-7.5")

DIRECT HYDRAULIC DRIVE SYSTEM (1340cc MOTOR)

JAW SPEED RANGE (250, 265-280 RPM)

HYDRAULICALLY FOLDING HOPPER WING-PLATES

HOPPER CAPACITY OF 6.5M³ (8.5YD³)

VARIABLE SPEED ON SIDE DISCHARGE CONVEYOR

OVERBAND MAGNET (DUAL SIDE DISCHARGE)

HYDRAULIC DRIVE VIBRATING FEEDER

ULTRASONIC LEVEL SENSOR AS STANDARD

VIBRATING FEEDER 400-945RPM SPEED RANGE
WITH INTEGRATED SCREEN DECK

RADIO REMOTE CONTROL AS STANDARD

OPTIONS

DUST COVERS ON MAIN AND DISCHARGE CONVEYOR

SUPER/MULTI TOOTH JAW DIES

VARIOUS FEEDER UNDERSCREEN MESH

BELT SCALE

DEFLECTOR PLATE UNDER JAW

LIGHT MAST AND CABINET LIGHTS

WEIGHT

45,350 KG / 50 U.S. TON / 100,000 LBS



TRACKED IMPACT CRUSHERS

THE ANACONDA IMPACT CRUSHING RANGE OF MOBILE CRUSHERS IS DESIGNED TO SUIT STRENUOUS APPLICATIONS FOR SECONDARY CRUSHING TO PROCESS MATERIAL AS SMALL AS 15MM.

Anaconda's Impact Crushers combine power, precision and efficiency in a compact, user-friendly design.

The Anaconda I12 and I12R Impact Crusher feature a robust 1100mm x 1150mm (43" x 45") Universal Impact chamber, these crushers are built to handle even the most demanding crushing conditions, including abrasive materials like basalt and granite. The Anaconda I12R features an integrated recirculating screen system that allows oversize material to be returned to the Impact Crusher or stockpiled, ensuring the final product meets required specifications.

Engineered with a highly fuel-efficient hydraulic system, Anaconda's Impact Crushers deliver exceptional productivity. Despite their power, these machines are easy to transport and operate, making them ideal for a wide range of applications.

FEATURES AND BENEFITS

ENGINE OPTIONS:

CUMMINS IPU - L9 380 - TIER 2 (283Kw) - ROW
CUMMINS IPU - L9 380 - STAGE 5 (283Kw) - EU & USA
CAT - 9.3 - LRC - TIER 2 (310Kw) - ROW
CAT - 9.3 - STAGE 5 (310Kw) - EU & USA

UNIVERSAL CRUSHER IMPACT CHAMBERS

PRIMARY APRON RANGE 25-190MM (0.98" - 7.5")

SECONDARY APRON RANGE 15-125MM (0.6" - 4.9")

DIRECT HYDRAULIC DRIVE SYSTEM (535CC MOTOR)

IMPACT SPEED RANGE (630-700 RPM)

HYDRAULICALLY FOLDING HOPPER WING-PLATES

HOPPER CAPACITY OF 6.5M³ (8.5YD³)

VARIABLE SPEED ON SIDE CONVEYOR AND RETURN CONVEYOR

OVERBAND MAGNET (DUAL SIDE DISCHARGE)

HYDRAULIC DRIVE VIBRATING FEEDER

VIBRATING FEEDER 400-945RPM SPEED RANGE WITH INTEGRATED SCREEN DECK

RADIO REMOTE CONTROL AS STANDARD

I12R FEATURES:

RECIRCULATING SCREENBOX 12' X 5' (3.66M X 1.52M)

AUXILIARY TRANSFER CONVEYOR 500MM (20") (I12R)

OPTIONS

RECIRCULATION PACKAGE

RECIRCULATION SCREEN DECKS -
MESH OR PIANO WIRE

DUST COVERS ON MAIN AND DISCHARGE
CONVEYORS

VARIOUS FEEDER UNDERSCREEN MESH
BELT SCALE

LIGHT MAST AND CABINET LIGHTS

STEEL PAN FEEDER UNDER CHAMBER

WEIGHT

I12 | 37,800 KG / 41.7 US. TON / 83,335 LBS
I12R | 51,800KG / 57.1 US. TON / 114,200 LBS



TRACKED CONE CRUSHERS

THE ANACONDA CONE CRUSHING RANGE OF MOBILE CRUSHERS ARE DESIGNED TO SUIT APPLICATIONS OF TERTIARY CRUSHING TO PROCESS MATERIAL DOWN TO 6MM.

Anaconda's Cone crushing range are robust and powerful crushers that bring together the proven ability of the proven FLSmidth Raptor® Cone chambers within an innovative Anaconda tracked solution.

The C12 and C12R Cone Crusher offers versatility to suit the end user. With the choice of either short or standard head and a range of liners, end users are able to select the best option to suit their desired crushing application. The C12R's high energy double deck screen box provides an integrated screen system that ensures the required product specification.

By using direct drive technology, the C12 delivers maximum efficiency in powering the proven Raptor® Cone Chamber.

FEATURES AND BENEFITS

ENGINE OPTIONS:

CUMMINS IPU - L9 - TIER 2 (310Kw) - ROW
CUMMINS IPU - L9 - STAGE 5 (310Kw) - EU & USA
CAT - 9.3 - LRC - TIER 2 (310Kw) - ROW
CAT - 9.3 - STAGE 5 (310Kw) - EU & USA

FLSMIDTH RAPTOR® 250 CONE CHAMBER

DIRECT DRIVE CLUTCH AND PULLEY

HYDRAULIC ADJUST ON CLOSED SIDE SETTING AND TRAMP PROTECTION

MAXIMUM FEED IN SIZE 235MM (9.25")

MINIMUM CSS 6MM (0.24")

HYDRAULICALLY FOLDING HOPPER WING-PLATES

HOPPER CAPACITY OF 6.5M³ (8.5YD³)

CONTINUOUS LOAD AND MATERIAL MONITORING

SAFETY GUARDING AS STANDARD

LOCALISED GREASING POINTS

FULLY SERVICEABLE FROM GROUND LEVEL

ULTRASONIC LEVEL SENSOR AS STANDARD

RADIO REMOTE CONTROL AS STANDARD

C12R FEATURES:

RECIRCULATING SCREENBOX 12' X 5' (3.66M X 1.52M)

AUXILIARY TRANSFER CONVEYOR 500MM (20") (C12R)

OPTIONS

RECIRCULATION PACKAGE

HOPPER EXTENSIONS

BELT SCALE

LIGHT MAST AND CABINET LIGHTS

VARIOUS CONE LINER OPTIONS

WEIGHT

C12 | 33,000 KG / 36.3 US. TON / 72,752 LBS

12R | 40,000 KG / 44.1 US. TON / 88,184 LBS



TRACKED SCALPING SCREENS

ANACONDA SCALPING SCREENS ARE ENGINEERED FOR HEAVY-DUTY APPLICATIONS, SPECIFICALLY DESIGNED TO REMOVE BULKY, OVERSIZED MATERIAL DURING THE INITIAL STAGE OF SCREENING.

The range of heavy-duty screens offers optimum screening and stockpiling of materials. Designed with the contractor in mind, the scalpers offer high productivity while also allowing flexibility within the easily portable tracked system.

DF518

| SCREENBOX SIZE | NO. OF DECKS | HOPPER CAPACITY | WEIGHT |
|-------------------------|--------------|--|---|
| 18' X 5' 5.5M X 1.5M | 2 DECKS | 10.5YD ³ 8M ³ | Apron - 32,000KG / 35.3 US TON Belt - 30,500KG / 33.6 US TON |

DF514

| SCREENBOX SIZE | NO. OF DECKS | HOPPER CAPACITY | WEIGHT |
|--------------------------|--------------|---|---|
| 14' X 5' 4.27M X 1.5M | 2 DECKS | 9.4YD ³ 7.2M ³ | Apron - 27,500KG / 30.1 US TON Belt - 24,300KG / 26.7 US TON |

DF410

| SCREENBOX SIZE | NO. OF DECKS | HOPPER CAPACITY | WEIGHT |
|-----------------------|--------------|---|------------------------|
| 10' X 4' 3M X 1.2M | 2 DECKS | 5.9YD ³ 4.5M ³ | 15,600KG / 17.2 US TON |

FEATURES AND BENEFITS

ENGINE OPTIONS:
TIER 3 - CAT4.4 OR JCB444 DIESELMAX - ROW (DF518)
TIER 4F - JCB444 ECOMAX IPU OR STAGE 5 CAT 3.6- USA (DF518)
STAGE 5 - CAT 3.6 OR JCB444 DIESELMAX - EU (DF518)
TIER 3 - CAT4.4 OR JCB444 DIESELMAX - ROW (DF514)
TIER 4F - JCB444 ECOMAX IPU OR STAGE 5 CAT 3.6 - USA (DF514)
STAGE 5 - CAT 3.6 OR JCB444 DIESELMAX - EU (DF514)
TIER 3 - T.DEUTZ 2011 OR JCB444 DIESELMAX - ROW (DF410)
TIER 4F - JCB444 ECOMAX IPU OR STAGE 5 CAT - USA (DF410)
STAGE 5 - T.DEUTZ 2.9 L4 / CAT / JCB444 DIESELMAX - EU (DF410)

VARIABLE SPEED HEAVY-DUTY BELT FEEDER WITH IMPACT BED
FLIP DOWN HOPPER TAILGATE TO ALLOW DIRECT FEED FORM A CRUSHER
HYDRAULIC FOLDING STOCKPILE CONVEYORS
VARIABLE SCREEN ANGLE 13-17° (DF518)
VARIABLE SCREEN ANGLE 15-19° (DF514)
FIXED SCREEN ANGLE AT 15° (DF410)
SIDE TENSIONED TOP DECK
END TENSIONED BOTTOM DECK

OPTIONS

APRON FEEDER (DF518 - DF514)
RADIO REMOTE CONTROL
OVERBAND MAGNET
SCREEN DECKS - MESH, BOFAR BAR,
FINGER SCREENS OR PUNCH PLATES

KEY INFORMATION

DF410 OFFERS LONGEST SCREENBOX IN
COMPACT SCREENING SEGMENT
DF410 WILL FOLD AND SHIP WORLDWIDE
IN A STANDARD 40' SEA CONTAINER
DF514 AND DF518 ARE AVAILABLE IN BOTH
APRON AND BELT FEEDER OPTIONS TO SUIT
MULTIPLE APPLICATIONS



TRACKED SCALPING SCREENS

THE FSL100 IS A HEAVY-DUTY SCALPING SCREEN DESIGNED FOR THE MOST DIFFICULT OF APPLICATIONS.

The FSL100 scalping screen is one of the most robust and reliable scalping screens on the market. Built to handle the toughest of applications, the FSL100 comes with a double-deck vibrating screen and the longest stockpiling conveyor available.

The FSL100 can be set up and running within 20 minutes of delivery. The hydraulic controls make overall operation easy and simplifies changes in the position of the conveyor and double-deck vibrating screen.



FSL100

| VIBRATING GRID | CAPACITY |
|---|------------------------|
| 12' X 6' 3.7M X 2M | UP TO 600 TPH |
| HOPPER CAPACITY | WEIGHT |
| 6.3YD ³ 4.8M ³ | 18,900KG / 20.8 US TON |

FEATURES AND BENEFITS

ENGINE OPTIONS:
TIER 3 - T.DEUTZ 2011 OR JCB444 DIESELMAX - ROW
TIER 4F - JCB444 ECOMAX IPU OR STAGE 5 CAT - USA
STAGE 5 - T.DEUTZ 2.9 L4 / CAT / JCB444 DIESELMAX - EU

- ROBUST CHASSIS & TRACK FRAME ENSURES MAXIMUM DURABILITY
- ANGLE ADJUSTABLE VIBRATING GRID
- TIPPING FUNCTION ACTIVATED HYDRAULICALLY
- CONVEYOR BELT - 3PLY 1050MM (42") WIDE (PLAIN OR CHEVRON)
- INDEPENDENTLY CONTROLLED FEEDER AND DISCHARGE BELTS

OPTIONS

- VIBRATING GRIND WING EXTENSIONS
- OVERBAND MAGNET
- WEAR RESISTANT HOPPER LINERS
- RADIO REMOTE CONTROL
- DUST COVERS

KEY INFORMATION

- WILL FOLD AND SHIP WORLDWIDE IN STANDARD 40' SEA CONTAINER
- CAN BE FED WITH A WIDE VARIETY OF MACHINERY EASILY

TRACKED TROMMEL SCREENS

THE ANACONDA RANGE OF TRACKED TROMMELS ARE DESIGNED TO BREAKDOWN ORGANIC, RECYCLING AND STICKY AGGREGATE MATERIAL.

Material that is sticky or moisture-filled can cause problems for standard screen decks, but the Anaconda trommel range can handle any application. With a unique lift bar system within the drum, material is lifted and thrown in order to break it down more easily.

Ideal for many applications including compost, organic, wood chip and aggregate, Anaconda's Tracked Trommel Screens will break down material before further processing in order to maximize production.

TD620

| VIBRATING GRID | DRUM SIZE | HOPPER CAPACITY | WEIGHT |
|-----------------------|--------------------------|--|----------------------|
| 12' X 6' 3.7M X 2M | 18' X 6' 7" 5.5M X 2M | 12.6YD ³ 9.6M ³ | 20,000KG / 22 US TON |

TD516R

| CAPACITY | DRUM SIZE | HOPPER CAPACITY | WEIGHT |
|---------------|---------------------------------|---------------------------------------|----------------------|
| UP TO 150 TPH | 16' 9" X 4' 5" 5.15M X 1.37M | 5.2YD ³ 4M ³ | 14,500KG / 16 US TON |

FEATURES AND BENEFITS

ENGINE OPTIONS:
TIER 3 - CAT4.4 OR JCB444 DIESELMAX - ROW (TD620)
TIER 4F - JCB444 ECOMAX IPU OR STAGE 5 CAT 3.6 - USA (TD620)
STAGE 5 - JCB444 DIESELMAX OR CAT 3.6 - EU (TD620)
TIER 3 - JCB444 DIESELMAX - ROW (TD516R)
TIER 4F - JCB444 ECOMAX IPU OR STAGE 5 CAT - USA (TD516R)
STAGE 5 - T.DEUTZ 2.9 L4 / CAT / JCB444 DIESELMAX - EU (TD516R)

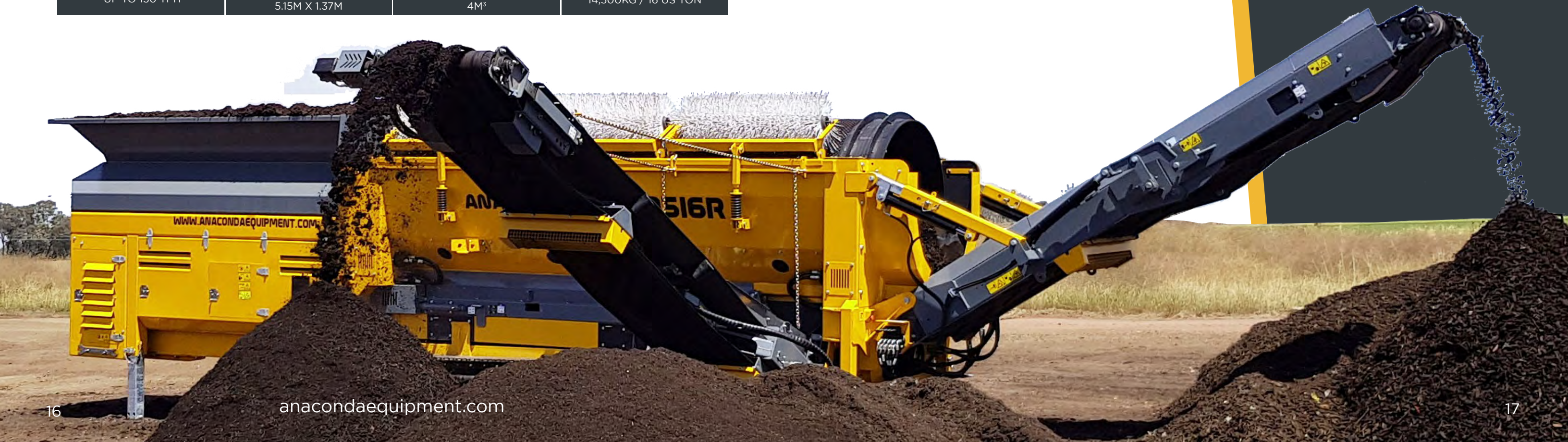
FORWARD AND REVERSE 4 WHEEL DRIVE DRUM SYSTEM
VARIABLE SPEED ON SCREENING DRUM AND ALL CONVEYORS
QUICK DRUM CHANGE (HYDRAULIC DRUM LIFT OUT) (TD620)
QUICK DRUM RELEASE AND REPLACE SYSTEM (TD516R)
DRUM LOAD SENSING SYSTEM (TD620)
DRUM ANGLE ADJUSTABLE 0° TO 6° (TD620) 0° TO 4° (TD516R)

OPTIONS

PUNCH PLATE MESH
SCROLL SCREENING DRUM
REMOTE TIPPING GRID
RADIO REMOTE CONTROL
HOPPER EXTENSIONS
WHEEL CHASSIS
SINGLE DECK VIBRATING GRID (TD620)

KEY INFORMATION

TD516R WILL FOLD AND SHIP WORLDWIDE
IN STANDARD 40' SEA CONTAINER



TRACKED FINISHING SCREENS

THE ANACONDA SR RANGE OF MOBILE SCREENS HAS BEEN DESIGNED TO SUIT APPLICATIONS WHERE FINE SCREENING IS REQUIRED.

SR520

| SCREEN DECKS | SCREENBOX SIZE | HOPPER CAPACITY | WEIGHT |
|--------------|--------------------------|--|--|
| 3 | 20' X 5' 6.15M X 1.5M | 10.5YD ³ 8M ³ | 38,720KG / 42.7 US TON w/ livehead 43,220KG / 49.8 US TON |
| 2 | 20' X 5' 6.15M X 1.5M | 10.5YD ³ 8M ³ | 31,640KG / 34.8 US TON w/ livehead 36,640KG / 40.3 US TON |

SR514

| SCREEN DECKS | SCREENBOX SIZE | HOPPER CAPACITY | WEIGHT |
|--------------|-------------------------|--|--|
| 3 | 14' X 5' 4.3M X 1.5M | 10.5YD ³ 8M ³ | 28,500KG / 31 US TON w/ livehead 33,000KG / 36 US TON |
| 2 | 14' X 5' 4.3M X 1.5M | 10.5YD ³ 8M ³ | 26,500KG / 29 US TON w/ livehead 31,000KG / 34 US TON |

SR410

| SCREEN DECKS | SCREENBOX SIZE | HOPPER CAPACITY | WEIGHT |
|--------------|-----------------------|---|----------------------|
| 2 | 10' X 4' 3M X 1.2M | 7.1YD ³ 5.8M ³ | 15,500KG / 17 US TON |

Anaconda's Finishing Screens are ideal for operations with the goal of fine material retention. An optional rinsing screen provides a washing solution to operators. Anaconda Finishing Screens are equipped with a tipping grid that scalps bulky material before entering the screen box.

FEATURES AND BENEFITS

ENGINE OPTIONS:
TIER 3 - CAT4.4 OR JCB444 DIESELMAX - ROW (SR520)
TIER 4F - JCB444 ECOMAX IPU OR STAGE 5 CAT - USA (SR520)
JCB444 DIESELMAX OR STAGE 5 CAT - EU (SR520)
TIER 3 - CAT4.4 OR JCB444 DIESELMAX - ROW (SR514)
TIER 4F - JCB444 ECOMAX IPU OR STAGE 5 CAT 3.6 - USA (SR514)
STAGE 5 - JCB444 DIESELMAX OR CAT 3.6 - EU (SR514)
TIER 3 - T.DEUTZ 2011 OR JCB444 DIESELMAX - ROW (SR410)
TIER 4F - JCB444 ECOMAX IPU OR STAGE 5 CAT - USA (SR410)
STAGE 5 - T.DEUTZ 2.9 L4 / CAT / JCB444 DIESELMAX - EU (SR410)

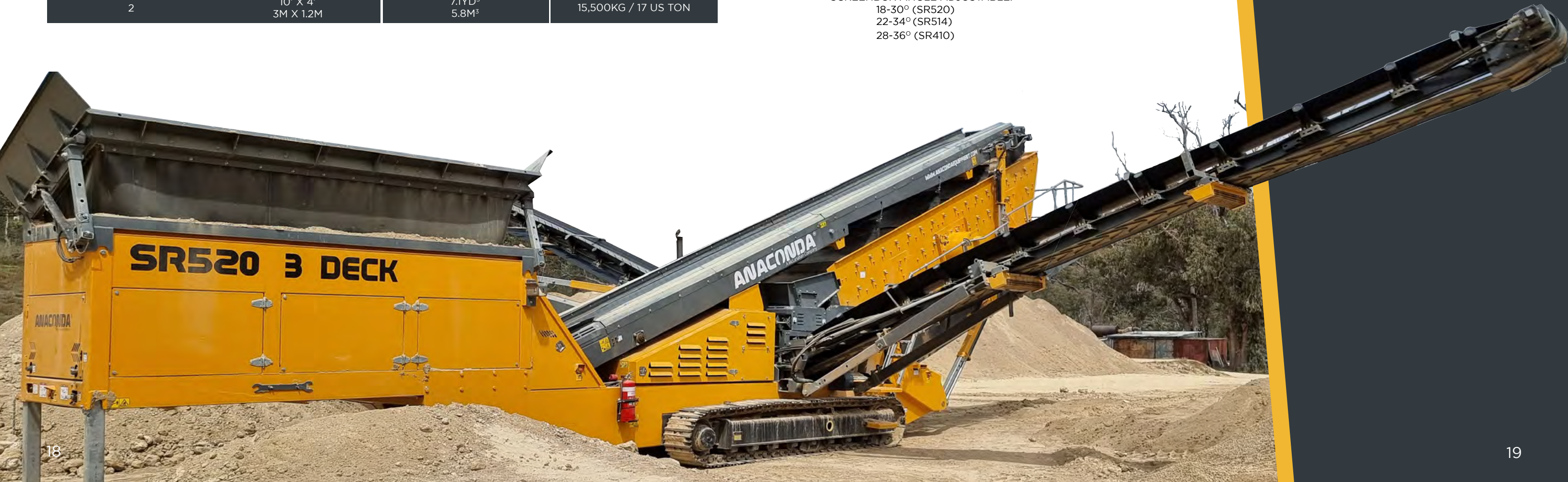
SCREEN MESH TOP-DECK (AND MIDDLE ON THE SR514)
SIDE TENSIONED; BOTTOM-DECK END TENSIONED
VARIABLE SPEED CONTROL ON ALL STOCKPILE BELTS
SCREENBOX WALKWAYS FOR EASE OF MAINTENANCE
SCREENBOX ANGLE ADJUSTABLE:
18-30° (SR520)
22-34° (SR514)
28-36° (SR410)

OPTIONS

- RINSER SCREEN
- ANTI-ROLL BACK
- HOPPER EXTENSIONS
- VIBRATING GRID
- TIPPING GRID
- RADIO REMOTE CONTROL
- DUST COVERS
- OVERBAND MAGNET
- ANTI-ROLL BACK
- SCREEN DECKS - MESH, PIANO WIRE
- OR PUNCH PLATE

KEY INFORMATION

SR410 WILL FOLD AND SHIP WORLDWIDE IN STANDARD 40' SEA CONTAINER



TRACKED RINSING SCREENS

THE ANACONDA SR RINSING RANGE IS DESIGNED FOR APPLICATIONS WHERE WASHING AND REMOVING SOLUBLE CLAY AND DUST COATINGS FROM AGGREGATES IS ESSENTIAL.

SR520

| SCREENBOX SIZE | SCREEN DECKS | HOPPER CAPACITY | WEIGHT |
|--------------------------|--------------|--|--|
| 20' X 5' 6.15M X 1.5M | 3 | 10.5YD ³ 8M ³ | 38,720KG / 42.7 US TON w/ livehead 43,220KG / 49.8 US TON |
| 20' X 5' 6.15M X 1.5M | 2 | 10.5YD ³ 8M ³ | 31,640KG / 34.8 US TON w/ livehead 36,640KG / 40.3 US TON |

SR514

| SCREENBOX SIZE | SCREEN DECKS | HOPPER CAPACITY | WEIGHT |
|-------------------------|--------------|--|--|
| 14' X 5' 4.3M X 1.5M | 3 | 10.5YD ³ 8M ³ | 28,500KG / 31 US TON w/ livehead 33,000KG / 36 US TON |
| 14' X 5' 4.3M X 1.5M | 2 | 10.5YD ³ 8M ³ | 26,500KG / 29 US Ton w/ livehead 31,000KG / 34 US TON |

Designed with unique rinsing kits over the screenboxes, Anaconda Rinsing Screens wash the aggregates as they pass through the screen, producing a high-quality finished product. The screens will work with the standard SR Tail Conveyor or they can be fitted with a catchbox system in order to catch the sand product after discharge. The rinser can easily be removed to run the machine as a dry screen.

FEATURES AND BENEFITS

ENGINE OPTIONS:
TIER 3 - CAT4.4 OR JCB444 DIESELMAX - ROW (SR520)
TIER 4F - JCB444 ECOMAX IPU OR STAGE 5 CAT - USA (SR520)
JCB444 DIESELMAX OR STAGE 5 CAT - EU (SR520)
TIER 3 - CAT4.4 OR JCB444 DIESELMAX - ROW (SR514)
TIER 4F - JCB444 ECOMAX IPU OR STAGE 5 CAT 3.6 - USA (SR514)
STAGE 5 - JCB444 DIESELMAX OR CAT 3.6 - EU (SR514)

- 5 PIECE SIDE TENSIONED TOP AND SECOND DECK (SR520)
- 3 PIECE END TENSIONED BOTTOM DECK (SR520)
- 3 PIECE SIDE TENSIONED TOP AND SECOND DECK (SR514)
- 2 PIECE END TENSIONED BOTTOM DECK (SR514)
- SCREEN-BOX WALKWAYS FOR MAINTENANCE AND MESH CHANGE
- VARIABLE SPEED ON ALL STOCKPILE BELTS
- CAPABLE OF POWERING AN ANACONDA 36' X 25'TWIN SCREW (SR520)
- CAPABLE OF POWERING AN ANACONDA 36' X 25'SINGLE SCREW (SR514)

- ### OPTIONS
- VIBRATING GRID
 - RADIO REMOTE CONTROL
 - SCREEN DECKS - MESH, PIANO WIRE OR PUNCH PLATE
 - ANTI-ROLL BACK
 - TIPPING GRID
 - ANTI-ROLL BACK
 - HOPPER EXTENSIONS



WASHING EQUIPMENT

THE ANACONDA SCREW WASHER RANGE IS DESIGNED FOR APPLICATIONS WHERE WASHING AND REMOVING SOLUBLE CLAY AND DUST COATINGS FROM AGGREGATES IS ESSENTIAL.

The Anaconda Screw Washer range consists of both fine and coarse material screws available in both single and twin variations. Anaconda Screw Washers can also work in direct conjunction with the Anaconda Rinsing Screeners with a hydraulic coupling. They can also pair with the Anaconda stacker range to offer the user a complete washing solution.

Anaconda's washing range is designed to efficiently clean rock by spraying and scrubbing deleterious materials from the feed material loaded into the plant. They provide light to moderate scrubbing and washing to remove the soluble clays and dust coatings found in natural and crushed stone applications. This offers the user the ability to produce a high quality end product.

FEATURES AND BENEFITS

- 36" X 18' COARSE (SINGLE) - 30HP ELECTRIC MOTOR
- 44" X 20' COARSE (SINGLE) - 40HP ELECTRIC MOTOR
- 36" X 18' COARSE (DOUBLE) - 50HP ELECTRIC MOTOR
- 44" X 20' COARSE (DOUBLE) - 75HP ELECTRIC MOTOR
- 36" X 25' FINE (SINGLE) - 15HP ELECTRIC MOTOR OR HYDRAULIC COUPLING
- 44" X 32' FINE (SINGLE) - 25HP ELECTRIC MOTOR
- 54" X 34' FINE (SINGLE) - 40HP ELECTRIC MOTOR
- 36" X 25' FINE (DOUBLE) - 30HP ELECTRIC MOTOR OR HYDRAULIC COUPLING
- 44" X 32' FINE (DOUBLE) - 50HP ELECTRIC MOTOR
- 54" X 34' FINE (DOUBLE) - (X2) 40HP ELECTRIC MOTOR

- HEAVY-DUTY GEAR REDUCER
- HELICAL SPIRAL SEGMENTS WITH CONTINUOUS SUBMERGED ARC WELD
- EXTRA-THICK, ONE-PIECE SHAFT TUBING
- REPLACEABLE ARMOR WEAR SHOES STANDARD WITH OPTIONAL URETHANE WEAR SHOES
- WEAR SHOES COVER THE FULL FACE OF SPIRAL
- WASHER TUB IS FABRICATED WITH THICK GAUGE STEEL
- CLOSE-CLEARANCE CURVED PLATE RUNS ENTIRE LENGTH OF SHAFT
- EXTRA-WIDE SIDE FLARES
- ADJUSTABLE WEIRS

FINE MATERIAL

- 36" X 25' (SINGLE) - 4,650 KG / 5.1 US TON
- 36" X 25' (DOUBLE) - 8,912 KG / 9.8 US TON
- 44" X 32' (SINGLE) - 8,120 KG / 9 US TON
- 44" X 32' (DOUBLE) - 16,420 KG / 18.1 US TON
- 54" X 34' (SINGLE) -12,946 KG / 14.3 US TON
- 54" X 34' (DOUBLE) - 24,948 KG / 27.5 US TON

COARSE MATERIAL

- 36" X 18' (SINGLE) - 5,512 KG / 6.1 US TON
- 36" X 18' (DOUBLE) - 9,345 KG / 10.3 US TON
- 44" X 20' (SINGLE) - 9,979 KG / 11 US TON
- 44" X 20' (DOUBLE) -15,604 KG / 17.2 US TON

OPTIONS

- DISCHARGE CHUTE
- WASHER SUPPORTS
- SAFETY COVERS
- PILLOW-BLOCK REAR BEARING(S)
- OVERFLOW FLUTE



TRACKED FEEDING CONVEYORS

THE FTR FEED LOADERS ARE THE IDEAL SOLUTIONS FOR THE LOADING OF BIG PLANTS AND SHIPS, OR FOR BIG VOLUME STOCKPILING.

FTR200

| CONVEYOR SIZE | DISCHARGE HEIGHT | HOPPER CAPACITY | WEIGHT |
|---------------|--------------------------|-----------------|---|
| 65.5FT 20M | MAXIMUM 28.5FT / 8.7M | 13YD³ 10M³ | Open Feed - 14,495KG / 15.9 US TON w/ Tipping Grid - 17,00KG / 18.7 US TON w/ Livehead - 18,985KG / 20.9 US TON |

FTR150

| CONVEYOR SIZE | DISCHARGE HEIGHT | HOPPER CAPACITY | WEIGHT |
|---------------|---------------------------|-----------------|--|
| 49.2FT 15M | MAXIMUM 20.8FT / 6.35M | 13YD³ 10M³ | Open Feed - 13,300KG / 14.7 US TON w/ Tipping Grid - 15,000KG / 16.7 US TON |

FTR100

| CONVEYOR SIZE | DISCHARGE HEIGHT | HOPPER CAPACITY | WEIGHT |
|---------------|--------------------------|-----------------|--|
| 32.8FT 10M | MAXIMUM 12.8FT / 3.9M | 13YD³ 10M³ | Open Feed - 12,700KG / 14 US TON w/ Tipping Grid - 14,400KG / 15.8 US TON |

FEATURES AND BENEFITS

TIER 3 - T.DEUTZ 2011 OR JCB444 DIESELMAX - ROW (FTR100, 150 & 200)

TIER 4F - JCB444 ECOMAX IPU OR STAGE 5 CAT - USA (FTR100, 150 & 200)

STAGE 5 - T.DEUTZ 2.9 L4 / CAT / JCB444 DIESELMAX - EU (FTR100, 150 & 200)

HOPPER CAPACITY OF 6M³ (1320 GALLONS) WITH AN OPTION TO INCREASE THIS TO 9M³ (1980 GALLONS)

VARIABLE SPEED 4 PLY 1050MM (42") WIDE FEEDER BELT

HYDRAULIC JACKING LEGS FOR EASE OF SET UP

HYDRAULIC FOLDING HEAD SECTION AS STANDARD

EASY ACCESS TO ENGINE COMPARTMENT

OPTIONS

- TWIN DECK VIBRATION GRID
- STRAIGHT EXTENSIONS
- MULCHING DRUM
- REMOTE CONTROL TIPPING GRID
- OVERBAND MAGNET
- ANTI-ROLL BACK ON MAIN CONVEYOR
- DUST COVERS
- RADIO REMOTE CONTROL
- OPTIONAL FLARED EXTENSION
- TWIN DRIVE MOTORS ON FEEDER AND OR MAIN CONVEYOR

FTR100 / FTR150 - WILL FOLD AND SHIP WORLDWIDE IN STANDARD 40' SEA CONTAINER



TRACKED CONVEYORS

ANACONDA’S RANGE OF TRACKED (TR) CONVEYORS PROVIDE A MOBILE CONVEYING SOLUTION TO MAXIMIZE STOCKPILE CAPACITY.

TR10042

| CONVEYOR SIZE | DISCHARGE HEIGHT | HOPPER CAPACITY | WEIGHT |
|---------------|-------------------------|---|--------------------------|
| 101FT 31M | MAXIMUM 44FT / 13.5M | 2.1YD ³ 1.6M ³ | 19,200KG 21.16 US TON |

TR7542

| CONVEYOR SIZE | DISCHARGE HEIGHT | HOPPER CAPACITY | WEIGHT |
|---------------|---------------------------|---|-----------------------|
| 75FT 23M | MAXIMUM 34.5FT / 10.5M | 2.1YD ³ 1.6M ³ | 14,500KG 16 US TON |

TR6036

| CONVEYOR SIZE | DISCHARGE HEIGHT | HOPPER CAPACITY | WEIGHT |
|---------------|------------------------|---|-------------------------|
| 60FT 18.3M | MAXIMUM 29FT / 8.9M | 1.8YD ³ 1.4M ³ | 11,000KG 12.1 US TON |

FEATURES AND BENEFITS

- I. TIER 3 – JCB444 DIESELMAX – ROW (TR75 & TR100)
- II. TIER 3 – CAT 2.2 – ROW (TR60)
- III. TIER 4F – JCB444 ECOMAX IPU OR STAGE 5 CAT – USA (ALL TRS)
- IV. STAGE 5 – T.DEUTZ 2.9 L4 / CAT / JCB444 DIESELMAX – EU (ALL TRS)

OPTIONS

- OVERBAND MAGNET (TRACKED)
- CHEVRON BELT
- EXTENDED FEEDBOOTS
- ENCLOSED SKIRTING
- DUST COVERS

TR75 / TR60 - WILL FOLD AND SHIP WORLDWIDE IN STANDARD 40’ SEA CONTAINER



WHEELED CONVEYORS

ANACONDA'S RANGE OF ST CONVEYORS ARE DESIGNED TO MINIMISE OPERATING COSTS WHILE MAXIMISING STOCKPILE CAPACITY.

ST8036

| CONVEYOR SIZE | DISCHARGE HEIGHT | HOPPER CAPACITY | WEIGHT |
|---------------|-------------------------|---|--------------------------|
| 80FT 24.5M | MAXIMUM 33FT / 10.2M | 2.1YD ³ 1.6M ³ | 10,500KG 11.59 US TON |

ST6032

| CONVEYOR SIZE | DISCHARGE HEIGHT | HOPPER CAPACITY | WEIGHT |
|---------------|-------------------------|---|------------------------|
| 60FT 18M | MAXIMUM 27FT / 8.25M | 2.1YD ³ 1.6M ³ | 3,200KG 3.53 US TON |

ST5032

| CONVEYOR SIZE | DISCHARGE HEIGHT | HOPPER CAPACITY | WEIGHT |
|---------------|-------------------------|---|------------------------|
| 50FT 15.2M | MAXIMUM 23FT / 7.05M | 1.8YD ³ 1.4M ³ | 2,800KG 3.09 US TON |

FEATURES AND BENEFITS

- I. TIER 3 – CAT 2.2 – ROW (ALL STS)
- II. TIER 4F – JCB444 ECOMAX IPU OR STAGE 5 CAT – USA (ALL STS)
- III. STAGE 5 – T.DEUTZ 2.9 L4 / CAT / JCB444 DIE-SELMAX – EU (ALL STS)

ST80 POWERUNIT - WILL FOLD AND SHIP WORLDWIDE IN A STANDARD 40' SEA CONTAINER

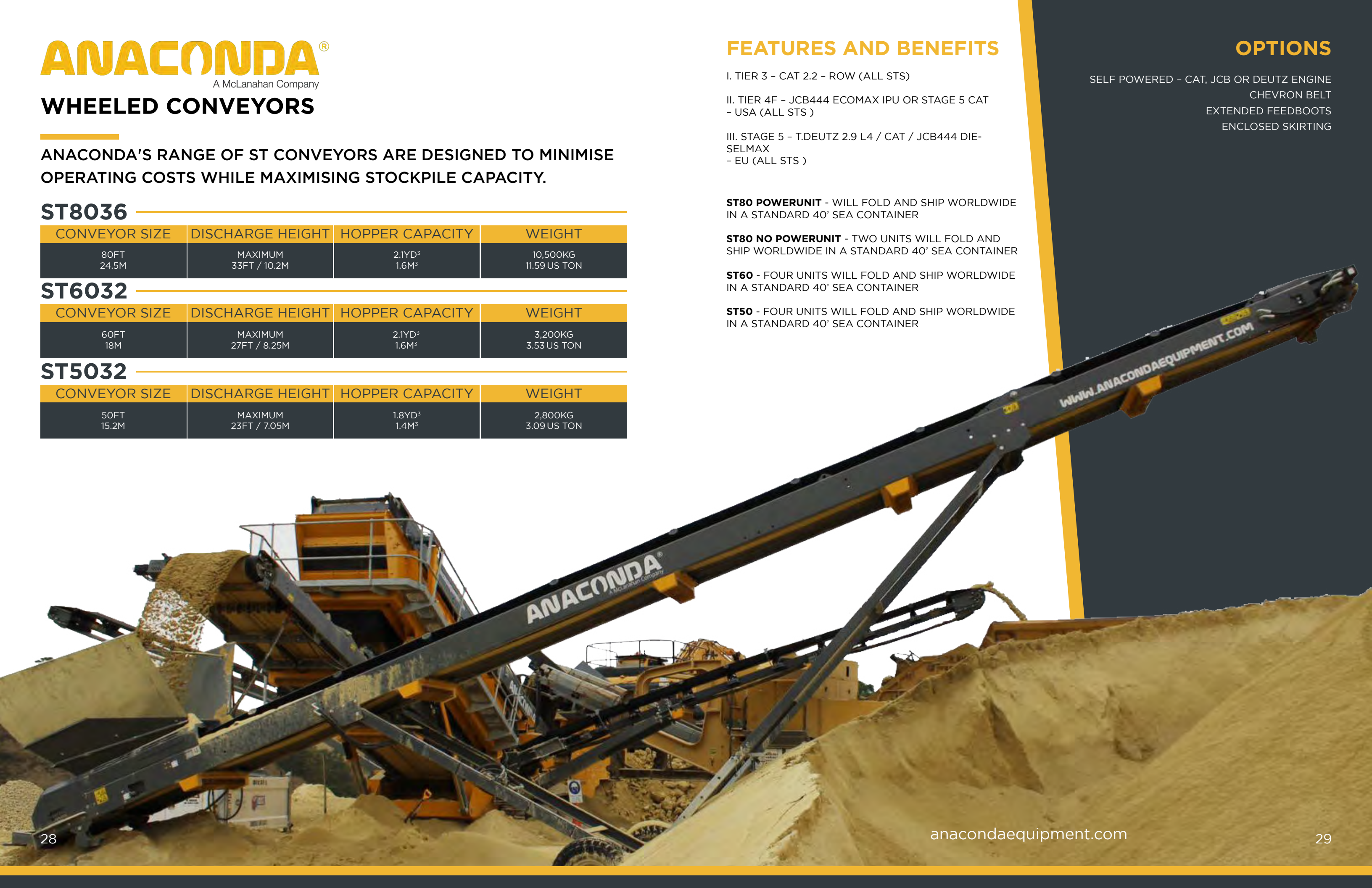
ST80 NO POWERUNIT - TWO UNITS WILL FOLD AND SHIP WORLDWIDE IN A STANDARD 40' SEA CONTAINER

ST60 - FOUR UNITS WILL FOLD AND SHIP WORLDWIDE IN A STANDARD 40' SEA CONTAINER

ST50 - FOUR UNITS WILL FOLD AND SHIP WORLDWIDE IN A STANDARD 40' SEA CONTAINER

OPTIONS

- SELF POWERED – CAT, JCB OR DEUTZ ENGINE
- CHEVRON BELT
- EXTENDED FEEDBOOTS
- ENCLOSED SKIRTING



GLOBAL AFTERSALES & SERVICE

BENEFITS

At Anaconda, exceptional service and support are the foundation of everything we do. We're committed to standing by our customers from the moment a machine is delivered, ensuring it performs reliably throughout its lifetime to maximize efficiency and profitability.



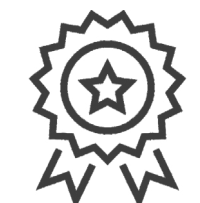
Direct contact to experienced service engineers globally. Remote assistance available, as well as on-site when necessary.



Anaconda only supplies genuine Anaconda[®] spare parts to prevent damage to machines, improve performance and protect warranty / resale value.



Technical training conducted at the factory, on-site or remotely depending on the needs of the customer.



Our dealers all operate with fully trained service and application support teams.



We ensure that all dealers are stocked with critical spares to reduce downtime. Additional volume is held at the head office in Ireland and distribution center in Pennsylvania ready for dispatch.





Sound Heavy Machinery

1809 Blue Clay Road
Wilmington, NC 28405
910.782.2477
info@SoundHM.com
www.SoundHM.com

anacondaequipment.com